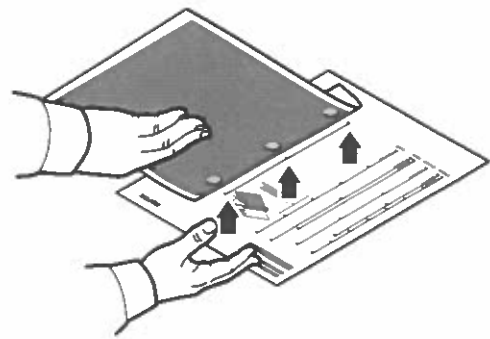


Repeating Defects

Xerox® Altalink® B8145/B8155/B8170
Multifunction Printer

WFBUI
↑
97503



To identify the component causing the defect, compare your print sample against the measurements shown.

To diagnose a defect on the transfer belt:

1. Print eight Letter/A4-size pages long-edge feed. Verify that the same defect appears on every fourth page.

Or

2. Print four Tabloid/A3-size pages. Verify that the same defect appears on every other page.
Call for service for this defect.

