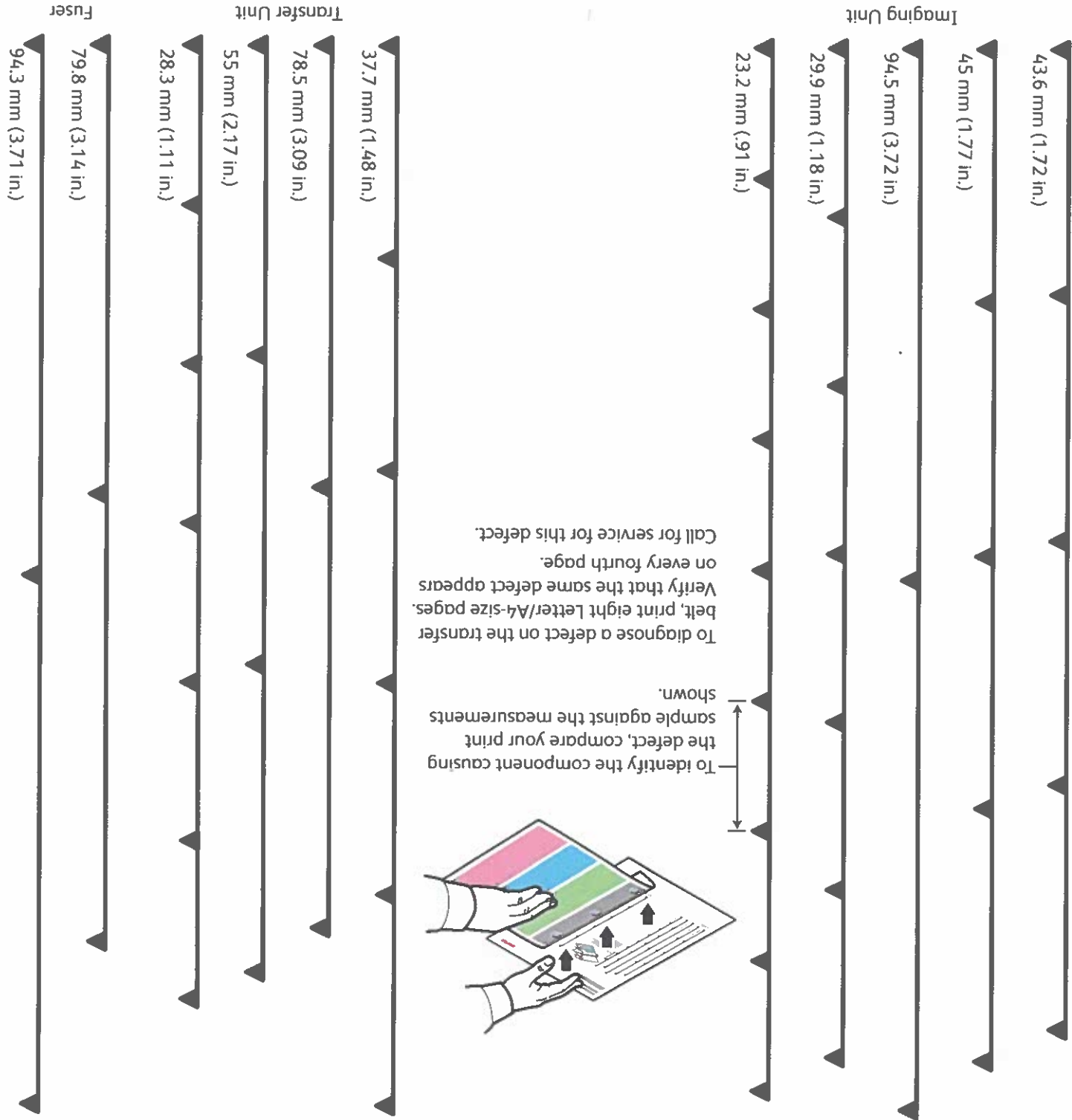
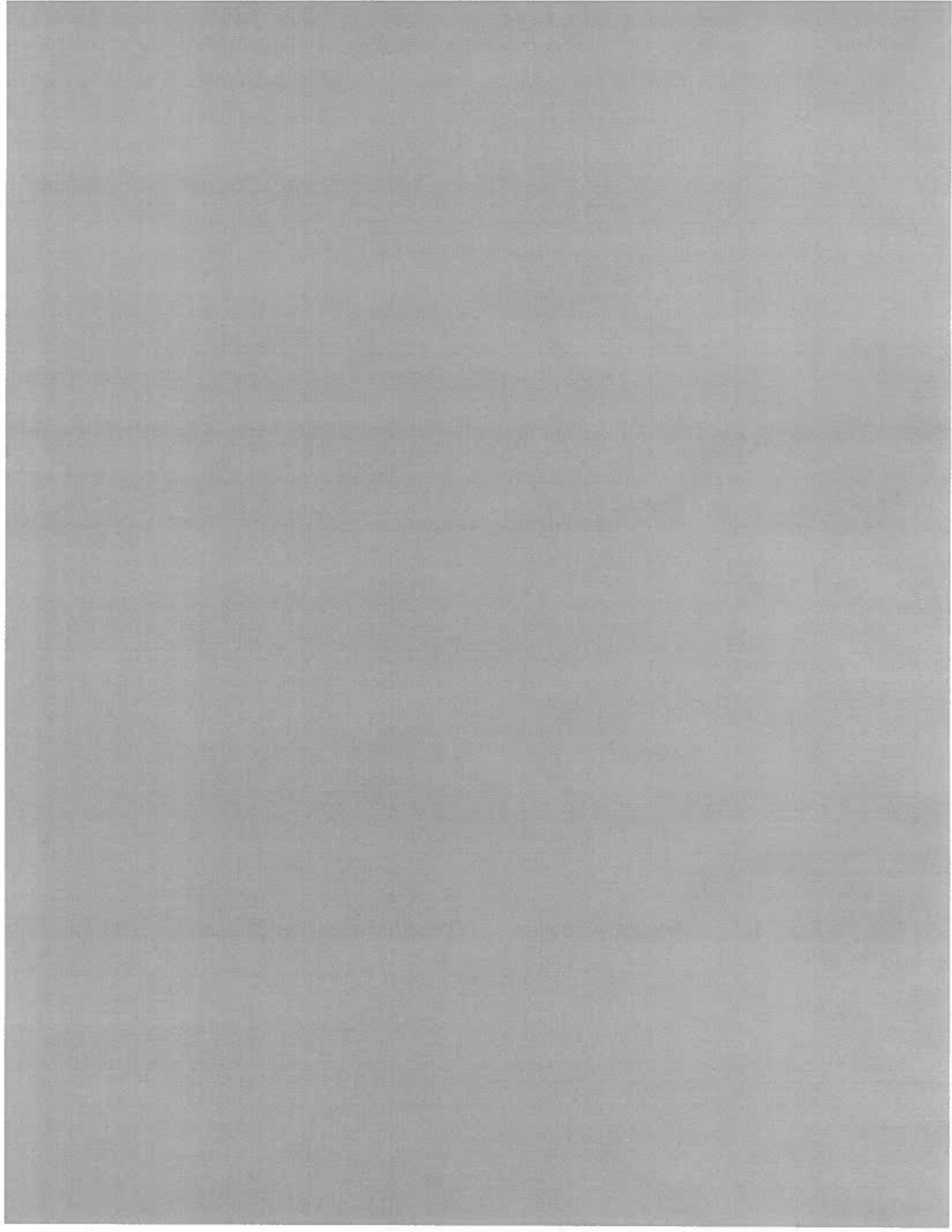


Repeating Defects

Xerox® Versalink® C415 Color Multifunction Printer

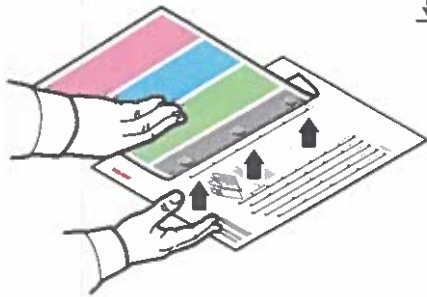
CANYON MFP (A best)
 (883880)





Repeating Defects

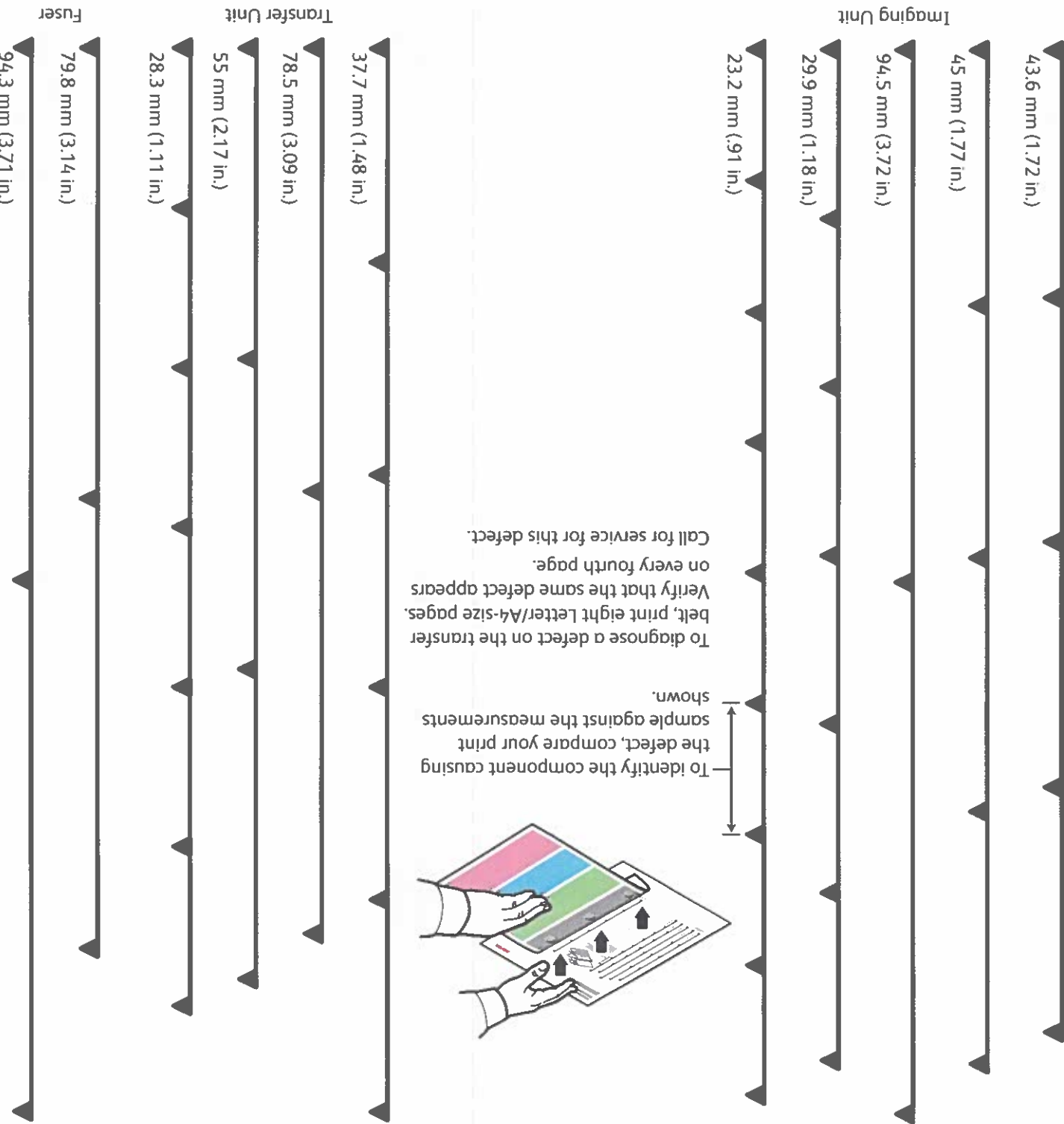
Xerox® VersaLink® C415 Color Multifunction Printer



To identify the component causing the defect, compare your print sample against the measurements shown.

To diagnose a defect on the transfer belt, print eight Letter/A4-size pages. Verify that the same defect appears on every fourth page.

Call for service for this defect.



(-23320)

XEROX (Admin)

Call you MFP

the 1990s, the number of people with a mental health problem has increased in the UK (Mental Health Act 1983).

There is a growing awareness of the need to improve the lives of people with mental health problems. The Department of Health (1999) has set out a strategy for mental health care in the UK. The strategy is based on the following principles:

• The promotion of mental health and the prevention of mental health problems.

• The provision of a range of services to meet the needs of people with mental health problems.

• The provision of services that are based on evidence-based practice.

• The provision of services that are accessible to all people with mental health problems.

• The provision of services that are cost-effective.

• The provision of services that are of high quality.

• The provision of services that are based on the needs of the community.

• The provision of services that are based on the needs of the individual.

• The provision of services that are based on the needs of the family.

• The provision of services that are based on the needs of the carer.

• The provision of services that are based on the needs of the community.

• The provision of services that are based on the needs of the individual.

• The provision of services that are based on the needs of the family.

• The provision of services that are based on the needs of the carer.

• The provision of services that are based on the needs of the community.

• The provision of services that are based on the needs of the individual.

• The provision of services that are based on the needs of the family.

• The provision of services that are based on the needs of the carer.

• The provision of services that are based on the needs of the community.

• The provision of services that are based on the needs of the individual.

• The provision of services that are based on the needs of the family.

• The provision of services that are based on the needs of the carer.

• The provision of services that are based on the needs of the community.

