

Protocols (cont.)

POP3	
POP3 Server:	0.0.0.0:110
POP3 Secure Connection (TLS):	Disabled
E-mail Address:	
NTP:	Enabled
FTP Client:	Enabled
FTP Client Mode:	Passive
Web Services on Device:	Enabled

Apps

Printing

Banner Sheet:	Enabled
Error Sheets:	Enabled
Paper Substitution:	Enabled
Tray Priority:	1,2,3,4,5
PostScript	Installed
Level:	3
Version:	3021.101
PCL	
Version:	6
Font Name:	Courier
Custom Color Tables	Enabled
Label:	Not Installed
Embedded Fax:	not installed

Fax Line1:	
Fax Line2:	
Server Fax:	Enabled
Repository Protocol:	FTP
Repository Server:	0.0.0.0:0
Repository Document Path:	

Workflow Scanning:	Enabled
--------------------	---------

Email:	Enabled
--------	---------

Scan to Mailbox:	Disabled
Storage Capacity (MB):	46978 MB
Storage Used (MB):	2486 MB
Cleanup of Public Folders:	Enabled
Cleanup of Created Folders:	Enabled
Cleanup Time:	Daily

Scan to Home:	Disabled
---------------	----------

Scan To:	Enabled
----------	---------

Cloud Services:	Disabled
-----------------	----------

Print From:	Enabled
-------------	---------

Saved Jobs for Reprint:	Enabled
-------------------------	---------

Print From USB:	Enabled
-----------------	---------

Print From MailBox:	Disabled
---------------------	----------

Cloud Services:	Disabled
-----------------	----------

Accounting

Accounting Mode:	None
Network Accounting:	Disabled

Security

Authentication Configuration

Machine UI Authentication:	Remotely on the Network
Home:	Unlocked
Jobs:	Unlocked
Device:	Unlocked
Device Website Authentication:	Remotely on the Network
Authorization:	Locally on the Device
Retrieve E-mail from LDAP:	Enabled
Authentication Server:	Kerberos
Xerox Secure Access:	Disabled
Audit Log:	Enabled
IP Sec:	Disabled
IP Filtering:	Disabled

Security Certificates

Machine Certificate:	Signed
Root Certificates Installed:	55
802.1x:	Disabled

Job Data Removal:

Scheduled:	Disabled
------------	----------

FIPS 140-3:	Disabled
-------------	----------

TLS:	TLS 1.1 and TLS 1.2
------	---------------------

TLS Hash:	SHA-1, SHA-256 and above
-----------	--------------------------

Trellix Embedded Control:	Enhanced Security
---------------------------	-------------------

## Protocols (cont.)

<b>Bonjour:</b>	
Bonjour Printer Name:	Xerox AltaLink B8270 MFP (A2:27:3B)
<b>HTTP:</b>	
Port Number:	80
Force Traffic over Secure Connection (H...)	Yes
Secure HTTP Port Number:	443
Proxy Server:	Automatic
Proxy Server Address:	0.0.0.0:8080
IPP:	Enabled
Secure IPP Mode:	IPP and Secure IPPS
IPP Network Path:	http://10.61.16.50:631
<b>SNMP:</b>	
SNMP v1/v2:	Enabled
SNMP v3:	Disabled
<b>LPR/LPD:</b>	
Port Number:	515
PDL Switching:	Disabled
PDL Banner Override:	Disabled
<b>Raw IP Printing:</b>	
Port Number 1:	9100
Bidirectional:	Disabled
End of Job Timeout:	300
PDL Switching:	Disabled
<b>LDAP:</b>	
LDAP Server 1 Friendly Name:	
LDAP Server 1 Primary LDAP Address:	0.0.0.0:389
LDAP Server 1 Alternate LDAP Address:	0.0.0.0:389
LDAP Server 1 Search Directory Root:	
LDAP Server 1 Secure Connection (LDA...)	Disabled
LDAP Server 1 Validate Server Certificate...	Disabled
<b>SMTP:</b>	
SMTP Server:	0.0.0.0:25
Connect Encryption (TLS):	No Encryption
Validate Server Certificate (TLS):	
Max Message Size (KB):	10240
Number of Fragments:	1
Total Job Size (KB):	300000
Job Splitting Boundary:	Page Boundary
Credentials for Auto E-mails:	None
Credentials for Walkup User:	None
<b>POP3:</b>	
POP3 Server:	0.0.0.0:110
POP3 Secure Connection (TLS):	Disabled
E-mail Address:	
Receipt of E-mail via POP3:	Disabled
Send Confirm on Request:	Enabled
Incoming E-mail cover sheet:	Enabled
<b>NTP:</b>	
Primary Server:	0.0.0.0:123
Alternate Server:	0.0.0.0:123
<b>SLP:</b>	
FTP Client:	Enabled
FTP Client Mode:	Passive
<b>Web Services on Device:</b>	
WS-Discovery:	Enabled
WS-Discovery Multicast:	Enabled
WS-Print:	Enabled
WS-Scan:	Enabled
<b>Web Services:</b>	
Copy Submission:	Enabled
Digital Certificate Management and Securi...	Enabled
Extensible Service Registration:	Enabled
Job Limits:	Enabled
Job Management Extension:	Enabled
Device Configuration:	Enabled
Scan Submission:	Enabled
Scan Workflow Management:	Enabled
Session Data:	Enabled
User Interface Configuration:	Enabled
EIP Proxy Configuration:	Enabled
Xerox Secure Access:	Disabled
EIP SNMP Configuration:	Enabled
Print Submission:	Enabled
Scan Template Mgmt:	Enabled
Mass Storage Access:	Enabled
Card Reader Access:	Enabled
Authentication & Accounting Configur...	Enabled
Export Audit Log:	Enabled
Trellix Embedded Control:	Enabled

## Apps

## Printing

Banner Sheet:	Enabled
Sys/Start Job:	Disabled
Delete Held Jobs After:	3 Day(s) 0 Hour(s) 0 Minute(s)
Error Sheets:	Enabled
Paper Substitution:	Enabled
Tray Priority:	1,2,3,4,5
Default Copies:	1
Default Job Type:	Normal Print
Default Paper Size:	x=210mm, y=297mm
Default Paper Color:	White
Default 2 Sided Printing:	1 Sided
Default Output Tray:	Main Tray
Default Output Color:	Black & White
Default Collated Sets:	Enabled
Default Stapling:	Not Available
Offsetting Between Jobs:	Offset Between Jobs
PostScript:	Installed
Level:	3
Version:	3021.101
Image Quality:	Standard

## PCL

Version:	6
Pitch Size:	10.00
Point Size:	12.00
Font Name:	Courier
Lines Per Page:	64
Custom Color Tables:	Enabled
Label:	Not Installed

## Embedded Fax:

Fax Line1:	not installed
Fax Line2:	

## Server Fax:

Confirmation Sheet:	Enabled
Delay Start:	Errors Only
Repository Protocol:	Disabled
Repository Server:	FTP
Repository Document Path:	0.0.0.0

## Workflow Scanning:

Confirmation Sheet:	Enabled
Default Repository Protocol:	Errors Only
Default Repository Server:	FTP
Default Repository Document Path:	0.0.0.0
Default Repository Login Credentials:	Device
Alt1 Repository Protocol:	FTP
Alt1 Repository Server:	0.0.0.0
Alt1 Repository Document Path:	Device
Alt1 Repository Login Credentials:	FTP
Workflow Pool Protocol:	0.0.0.0
Workflow Pool Server:	
Workflow Pool Path:	

## Email:

Default From Address:	Enabled
Confirmation Sheet:	Errors Only
Auto Send to Self:	Disabled
E-mail Security:	Disabled

## Scan to Mailbox:

View Mailboxes by Default:	Enabled
Storage Capacity (MB):	46978 MB
Storage Used (MB):	2486 MB
Cleanup of Public Folders:	Enabled
Cleanup of Created Folders:	Enabled
Cleanup Time:	Daily

## Scan to Home:

Friendly Name:	Disabled
Workflow Name:	Disabled
Auto Create Subdir:	Disabled
Append User Name to Path:	Disabled
Auto Create User Name Dir:	Disabled

## Scan To:

Cloud Services:	Enabled
Print From:	Enabled
Saved Jobs for Reprint:	Enabled
Print From USB:	Enabled
Print From MailBox:	Disabled
Cloud Services:	Disabled

Common User Data

Machine Name:	Xerox AltaLink B8270 MFP (A2:27:3B)
IP Address:	10.61.16.50
Machine Serial Number:	3141925023
Fax Line1:	
Machine URL:	https://10.61.16.50
Machine Activation Date:	Dec 15, 2023 09:03:26
Total Impressions:	469

Machine Profile

Xerox Asset Tag:	
Customer Asset Tag:	
Service Phone Number:	
Customer Support Number:	
Supplies Phone Number:	
System Administrator:	System Administrator name not set
Machine Location:	machine location not set
Managed By	
Primary MB Server:	

Machine Hardware

Fax Card:	not present
Extended Fax Card:	not present
Fax Card Memory Size:	0 MB
Foreign Interface Card:	not present
Device RAM Size:	4096 MB
Device Storage Size:	used=3434MB/total=256060MB (SSD)
EPC Memory Size:	900 MB
Finisher Type:	Offsetting Catch Tray
Finisher Punch:	None
Finisher Folder:	not present
Multi-feed Detection Kit:	Not Installed

General Setup

Remote Services:	Enabled
Remote Software Download:	Enabled
Remote Services Trans. Time:	13:06
Xerox Workplace Cloud	Disabled
E-mail Alerts:	Disabled
Service Plan:	Metered
Billing Impression Mode:	A4 Impressions
Geographic Region:	Western Hemisphere
GMT Offset:	+05:30
Cloning Installation	Allowed (Encrypted Files Only)
File Sharing	Enabled
JBIG2	Lossless

Energy Saver

Deep Sleep:	Enabled
Energy Saver Mode:	Job Activated

Smart Proximity Sensor

Wake on Arrival:	Enabled
Sleep on Departure:	Disabled

Software Versions

Device Software:	121.042.004.05310
Patch Version:	None
Network Controller:	121.042.05310
UI Panel Firmware:	003.002.00000
Marking Engine:	064.022.000
Document Feeder:	001.035.000
Finisher:	000.000.000
Fax:	000.000.000
Scanner:	017.023.006
Machine Upgrades:	Allowed
Last Successful Upgrade:	February 29, 2024 12:33:15

Media Trays

Tray 1:	Plain, White and A4 (210 x 297 mm)
Tray 2:	Plain, White and Letter (8.5 x 11")
Tray 3:	Plain, White and A4 (210 x 297 mm)
Tray 4:	Plain, White and Executive (7.25 x 11")
Bypass Tray:	Plain, White and x=105mm, y=241mm

Installed Options

PS:	Installed
-----	-----------

Connectivity

Mobile Workflows

Mopria Printing Discovery:	Enabled
Mopria Scanning	Enabled
Authentication	Disabled

Physical Connections

USB Settings	All Enabled
Usb Type A Ports	Enabled
Wired:	9c:93:4e:a2:27:3b
Ethernet MAC Address:	auto
Ethernet Speed/Duplex Setting:	Disabled

Wireless:

Wireless MAC Address:	
Network Name (SSID):	
BSSID:	
Security Mode:	
Encryption Algorithm:	
Status:	
Wi-Fi Direct:	Enabled
Wireless Hardware:	Not Installed
Wi-Fi Protected Setup (WPS) Name:	
Access Point (SSID):	
Show Password on Device Touch Screen:	
NFC:	Enabled

Protocols

TCP/IPv4:

IP Address:	10.61.16.50
Subnet Mask:	255.255.255.0
Router/Gateway:	10.61.16.1
Automatic Addressing:	DHCP
DHCP Server:	10.61.13.223
DHCP Lease Expiration:	Fri Mar 8 11:54:09 2024
BOOTP Broadcast:	Disabled
Self Assigned Address State:	Enabled
Self Assigned Address:	

TCP/IPv6:

Link Local Address:	Enabled
Use Router Supplied Prefix:	fe80::9e93:4eff:fea2:273b
Stateless Global Address 1:	Enabled
Stateless Global Address 2:	fd00:0:2:116:9e93:4eff:fea2:273b
Manual Address:	::
DHCP Addressing:	Use DHCP as directed by a router
DHCP Address:	
Default Gateway:	fe80::8afc:5dff:fe75:e282
DUID (DHCP Unique Identifier):	

DNS Settings:

Requested Host Name:	XR9C934EA2273B
Verified Host Name:	
Requested Domain Name:	
Verified Domain Name:	
Multicast DNS:	Enabled
Release DHCP Leases and DNS Registrati...	Disabled
Primary DNS Server:	10.61.7.15
Prefer IPv6 DNS over IPv4:	Enabled

Bonjour:

Bonjour Printer Name:	Xerox AltaLink B8270 MFP (A2:27:3B)
-----------------------	-------------------------------------

HTTP:

Force Traffic over Secure Connection (H...	Enabled
IPP	Yes

SNMP

SNMP v1/v2:	Enabled
SNMP v3:	Disabled

LPR/LPD:

Raw IP Printing:	Enabled
------------------	---------

LDAP

LDAP Server 1 Primary LDAP Address:	0.0.0.0:389
LDAP Server 1 Search Directory Root:	
LDAP Server 1 Secure Connection (LDA...	Disabled
LDAP Server 1 Validate Server Certificate...	Disabled

SMTP

SMTP Server:	0.0.0.0:25
Connect Encryption (TLS):	No Encryption
Validate Server Certificate (TLS):	

# Xerox® AltaLink® B8270 MFP

## Workflow Scanning Confirmation Report

xerox™

### Job Details:

#### Job Information

Device Name: Xerox AltaLink B8270 MFP V(A2:27:3B)  
Submission Date: 03/01/24  
Submission Time: 01:37 PM

#### Workflow Information

Name: DEFAULT.XST  
Owner: ---  
Description: ---

#### File Settings

Format: Image-Only PDF  
Multi-Page  
Images Filed: 0  
Bytes Filed: 0

#### Scan Settings

Images Scanned: 2  
Original Type: Photo and Text  
How Produced: Printed Original  
Original Orientation: Portrait Originals  
Original Size: Auto Detect  
Background Suppression: Off  
Lighten/Darken: Normal  
Contrast: Normal  
Sharpness: Normal  
Saturation: Normal  
Sides Imaged: 1-Sided  
Resolution: 200 dpi  
Bits per Pixel: 24  
Output Color: Auto Detect  
Quality/File Size: Higher/Larger  
Compression: MRC\_2LAYER\_MULTI

### Job Status:

0 out of 1 filed successfully.

Destination 1: Status\_\_\_\_\_ FAILED  
Status Details: Unable to connect to remote server.

Friendly Name:  
Server Name: 0.0.0.0  
Path:  
Protocol: FTP  
Filing Policy: Add Number  
Document Name:

Destination 2: Status\_\_\_\_\_

Status Details:  
Friendly Name:  
Server Name:  
Path:  
Protocol:  
Filing Policy:  
Document Name:

Destination 3: Status\_\_\_\_\_

Status Details:  
Friendly Name:  
Server Name:  
Path:  
Protocol:  
Filing Policy:  
Document Name:

Destination 4: Status\_\_\_\_\_

Status Details:  
Friendly Name:  
Server Name:  
Path:  
Protocol:  
Filing Policy:  
Document Name:

Destination 5: Status\_\_\_\_\_

Status Details:  
Friendly Name:  
Server Name:  
Path:  
Protocol:  
Filing Policy:  
Document Name:

Destination 6: Status\_\_\_\_\_

Status Details:  
Friendly Name:  
Server Name:  
Path:  
Protocol:  
Filing Policy:  
Document Name:

Accounting

Accounting Mode:  
Network Accounting:

None  
Disabled

Security

Authentication Configuration  
Machine UI Authentication

Home:  
Jobs:  
Device:  
Device Website Authentication:

Authorization:  
Retrieve E-mail from LDAP:  
Authentication Server:

Kerberos Primary Realm:  
Kerberos Primary Address:

Kerberos Alt 1 Realm:  
Kerberos Alt 1 Address:

SMB NT Domain:  
SMB Alt 1 NT Domain:

SmarCard Ctrl Server:  
SmarCard Ctrl Domain:

SmarCard OCSP URL:  
Card Reader Upgrade Policy:

Xerox Secure Access:  
Secure Access Server:  
Secure Access Path:

Audit Log:

IP Sec:  
IP Filtering:

Security Certificates:  
Machine Certificate:  
Root Certificates Installed:

Job Data Removal:  
802.1X:

Scheduled:  
FIPS 140-3:

TLS:  
TLS Hash:

Trellix Embedded Control:

Third Generation Browser:  
Widget Version:

Extensible Service Setup

Widget Version:  
Third Generation Browser:

X3G\_3.24.23.2.40.5\_011\_01.00.00  
v1.3.17 c8 20140613  
v2.5.04 g9 20240123

Enhanced Security  
SHA-1, SHA-256 and above  
TLS 1.1 and TLS 1.2

Disabled

Monthly

Disabled

Signed

SS

Disabled

Disabled

Enabled

Enabled

Disabled

0.0.0.443

Enabled

0.0.0.443

0.0.0.88

0.0.0.88

0.0.0.88

Enabled

Kerberos

Locally on the Device

Remotely on the Network

Unlocked

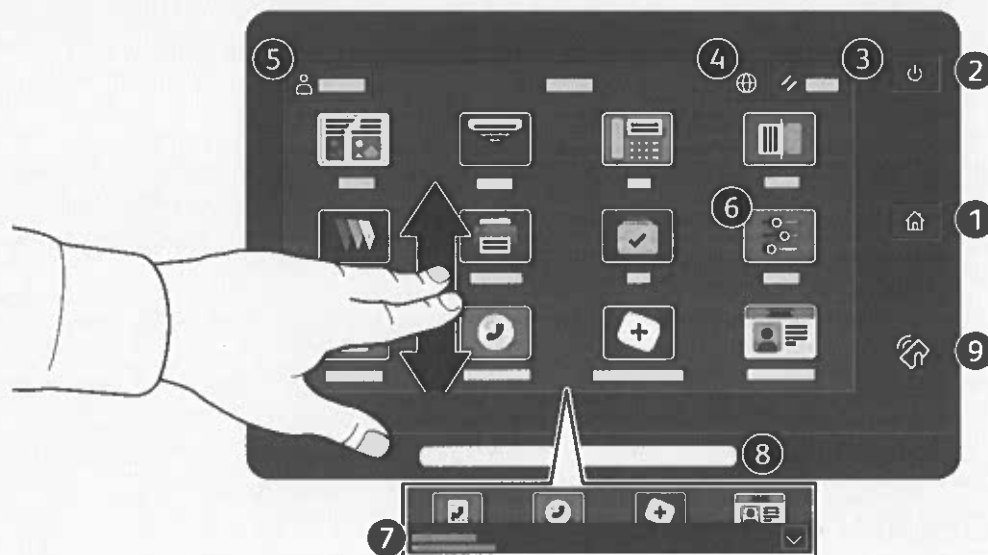
Unlocked

Unlocked

Remotely on the Network

## Control Panel

Available apps can vary based on your printer setup. For details about apps and features, refer to the *User Guide*.



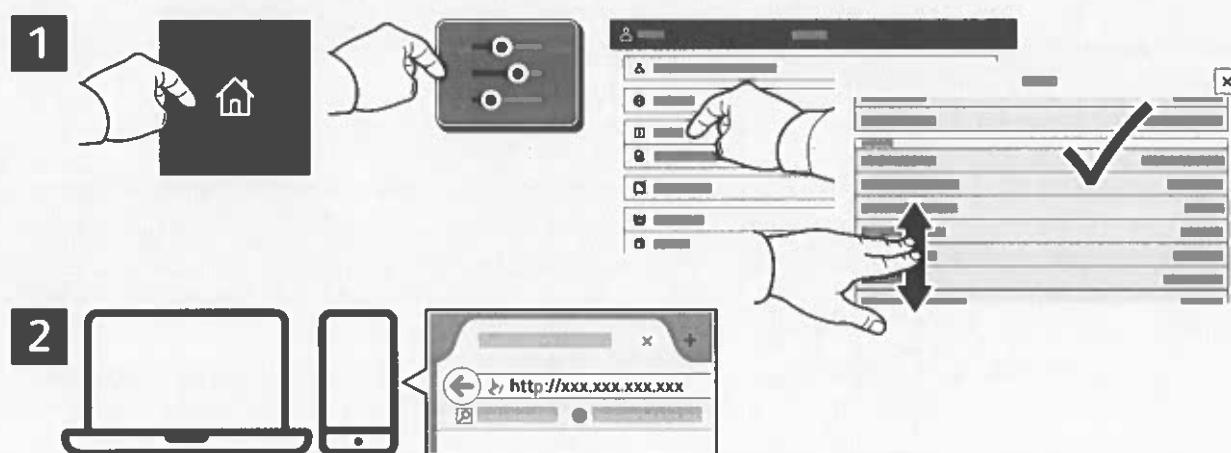
- 1 Home returns to the main app screen.
- 2 Power/Wake starts the printer or provides options to sleep, restart or power off the printer.
- 3 Reset restores settings to their default values in all apps.
- 4 Language provides choice of screen languages.
- 5 Log In provides special access to tools and settings.
- 6 Device app provides access to printer information and settings.
- 7 Notification banner shows printer status and warnings. To see all notifications, touch the banner. To close the banner, touch the down arrow.
- 8 Status LED indicates printer status. For detailed information, refer to the *User Guide*.
- 9 NFC Area allows pairing with a mobile device to print or scan from an app.

## Embedded Web Server

The Xerox® Embedded Web Server enables you to access printer configuration details, paper and supplies status, job status, and diagnostic functions over a network. You can also manage fax, email, and address books.

To connect, in a Web browser, type the printer IP address. The network IPv4 address is available on the control panel touch screen. Touch **Device app > About**, then scroll down.

For details on using the Embedded Web Server, refer to the *User Guide* located on [Xerox.com](http://Xerox.com).



## App Gallery

The Xerox App Gallery has a growing collection of productivity apps that you can install on your printer. Find the app on your home screen and create your login directly, or go to [www.xerox.com/appgallery](http://www.xerox.com/appgallery) to log in and add your device. To simplify app installation, use the same name for your app gallery login credentials that you used for the printer login.



## Paper Handling

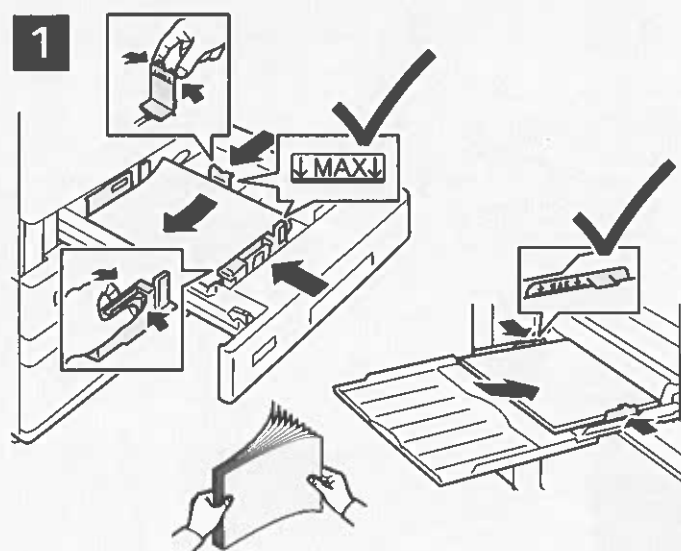
For a complete list of paper that works with your printer, see the Recommended Media List at:

[www.xerox.com/rmlna](http://www.xerox.com/rmlna) (U. S. and Canada)

[www.xerox.com/rmleu](http://www.xerox.com/rmleu) (Europe)

For details about trays and paper, refer to the *User Guide*.

## Loading Paper



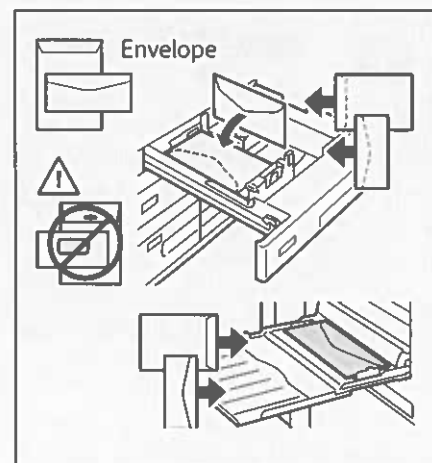
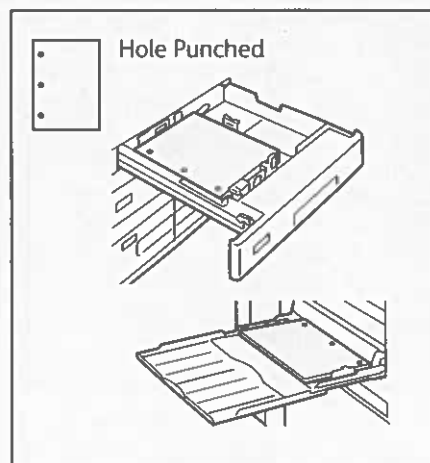
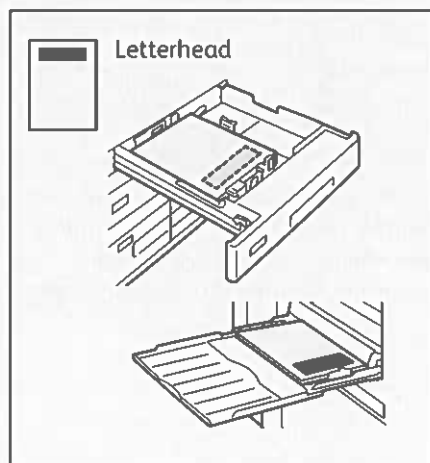
Confirm or change size, type, and color settings if needed.



For the best results, fan the edges of the paper. Adjust the guides to fit the paper size. Do not load paper above the maximum fill line.

When printing, select options in the print driver.

## Paper Orientation





## Scanning and Emailing

If the printer is connected to a network, you can select a destination for the scanned image at the printer control panel.

This guide defines techniques to scan documents without preparing special setups:

- Scanning documents to an email address.
- Scanning documents to a saved Favorite, Address Book listing, or USB Flash Drive.
- Scanning documents to the Default Public folder on the printer hard drive, and retrieving them using your Web browser.

For details and more scan setups, refer to the *User Guide*. For details about address book and workflow template setup, refer to the *System Administrator Guide*.

1



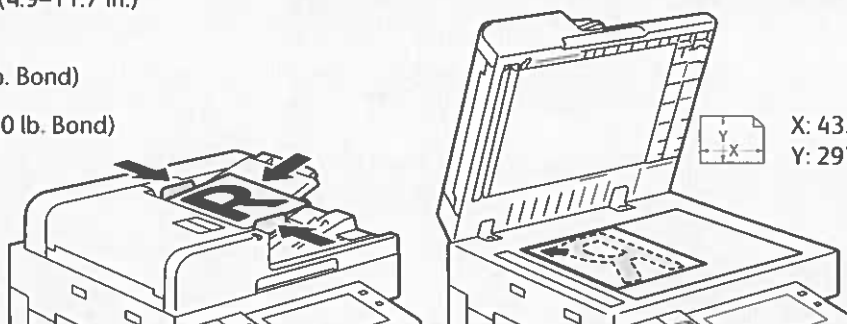
X: 85–432 mm (3.3–17 in.)  
Y: 125–297 mm (4.9–11.7 in.)



38–128 g/m<sup>2</sup>  
(26 lb. Text–34 lb. Bond)



≤130 (80 g/m<sup>2</sup>, 20 lb. Bond)  
B8270: ≤250



Load the original documents.

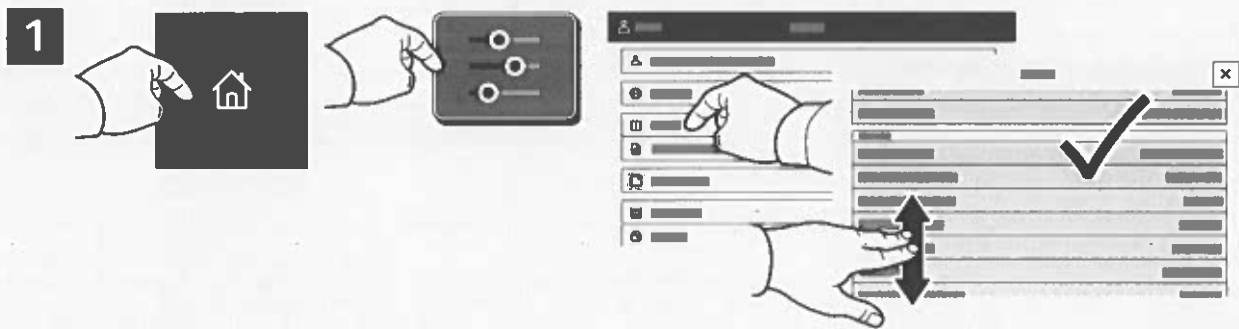
2



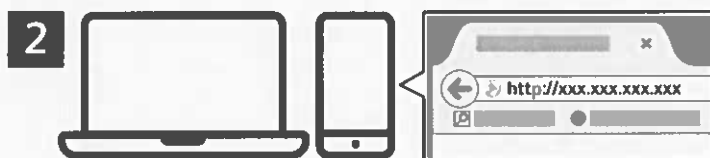
Press **Home**, then to email the scan, touch **Email**. To scan to the Default Public Folder or a USB Flash Drive, touch **Workflow Scanning**. If your scan destination is stored in the Address Book or saved as a Favorite, touch **Scan To**.

## Retrieving Scan Files

To download your scanned images from the Default Public Folder on the printer, use the Embedded Web Server. You can set up personal folders and workflow scanning templates in the Embedded Web Server. For details, refer to the *User Guide*.



Note the printer IP address on the touch screen. If the IP Address does not appear in the top of the touch screen, press Home, touch **Device** > **About** then scroll to check the IP Address.



In a Web browser, type the printer IP address, then press **Enter** or **Return**.



Click the **Scan** tab.

## Faxing

You can send a fax in one of four ways:

- **Fax** scans the document then sends it directly to a fax machine.
- **Server Fax** scans the document then sends it to a fax server, which transmits the document to a fax machine.
- **Internet Fax** scans the document then emails it to a recipient.
- **LAN Fax** sends the current print job as a fax.

For details, refer to the *User Guide*. For details about LAN Fax, refer to the print driver software. For details about fax setup and advanced settings, refer to the *System Administrator Guide*.

1



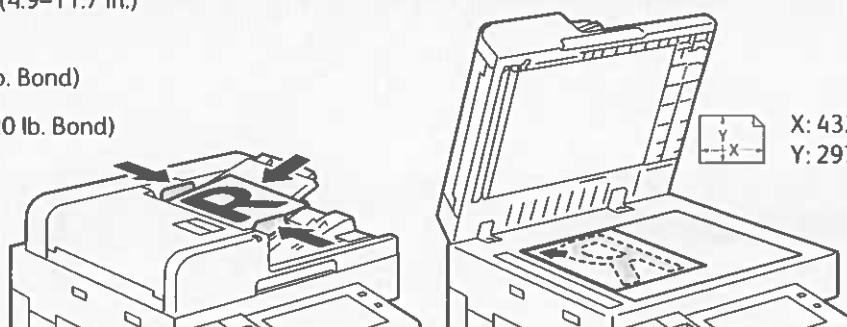
X: 85–432 mm (3.3–17 in.)  
Y: 125–297 mm (4.9–11.7 in.)



38–128 g/m<sup>2</sup>  
(26 lb. Text–34 lb. Bond)



≤130 (80 g/m<sup>2</sup>, 20 lb. Bond)  
B8270: ≤250



Load the original document.

2

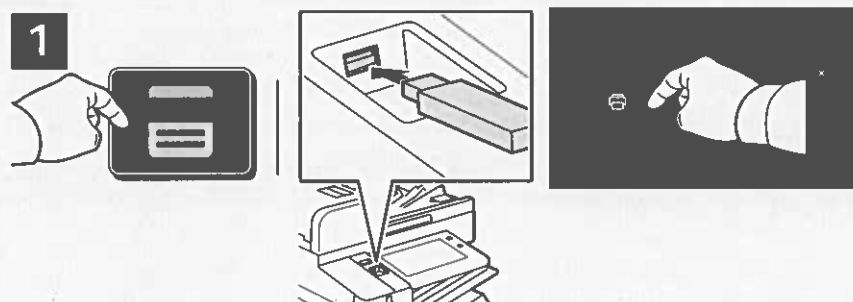


To send the fax to a fax machine, press **Home**, then touch **Fax** or **Server Fax**.

To send the fax as an email attachment, touch **Home**, then touch **Internet Fax**.

## Printing from a USB Flash Drive

You can print .pdf, .tiff, .ps, .xps and other files types directly from a USB Flash Drive. For more information, refer to the *User Guide*.

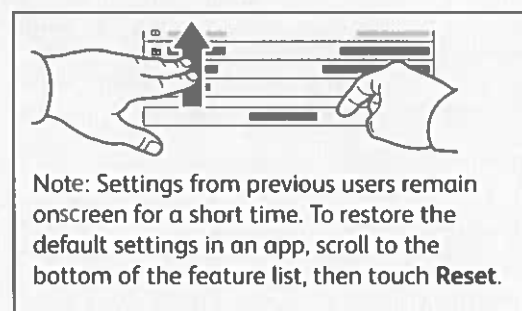


Touch **Print From** or insert your USB Flash Drive, then choose **Print From USB**.



To select the number of copies, touch the plus sign (+) or the minus sign (-). For larger numbers, touch **Quantity** then enter a number.

Touch **Add Document**, then navigate to your files and select them.



Select settings as needed, then touch **Print**.

## Troubleshooting Print Quality

Your Xerox® AltaLink® B8245/B8255/B8270 Multifunction Printer is designed to produce high-quality prints consistently. If you observe print-quality problems, use the information on these pages to troubleshoot the problems. For detailed online support information, go to [www.xerox.com/office/support](http://www.xerox.com/office/support).

**CAUTION:** The Xerox® warranty, Service Agreement, or Total Satisfaction Guarantee does not cover damage caused by using unsupported paper, transparencies, or other specialty media. The Total Satisfaction Guarantee is available in the United States and Canada. Coverage can vary outside of these areas. For details, contact your local representative.

### Paper Type

**CAUTION:** If you change the type of paper in the tray, change the paper type at the control panel to match the paper in the tray. If you fail to change the paper type, it can cause print-quality problems and damage the fuser.

For the best results, only use recommended Xerox® paper and media. Xerox® paper and media are guaranteed to produce excellent results on your Xerox® AltaLink® B8245/B8255/B8270 Multifunction Printer. To order Xerox® paper and media, go to [www.xerox.com/office/supplies](http://www.xerox.com/office/supplies).

For a complete list of recommended paper for your printer, go to:


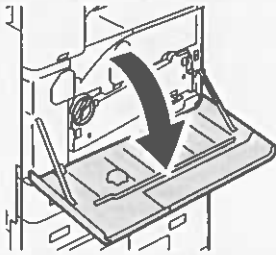
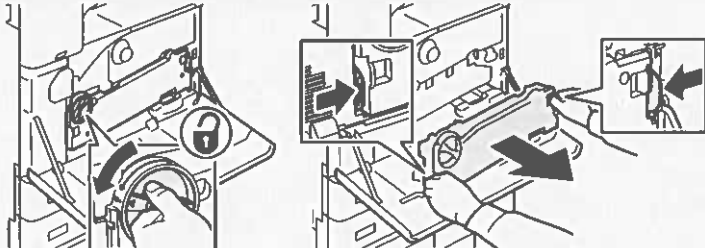
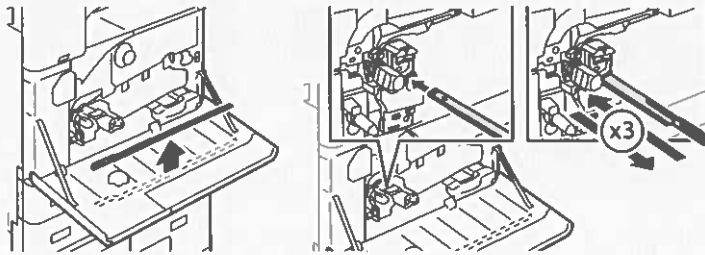
- North America: [www.xerox.com/rmlna](http://www.xerox.com/rmlna)
- Europe: [www.xerox.com/rmleu](http://www.xerox.com/rmleu)

### Solving Print-Quality Problems


Use the following tables to find specific solutions to print-quality problems.

**Note:** The images that appear represent long-edge feed prints. If you print short-edge feed, the print-quality defects are rotated 90 degrees. The images that appear are for reference only. Not all pages represented are printed.

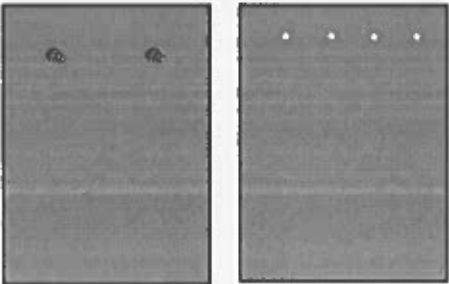
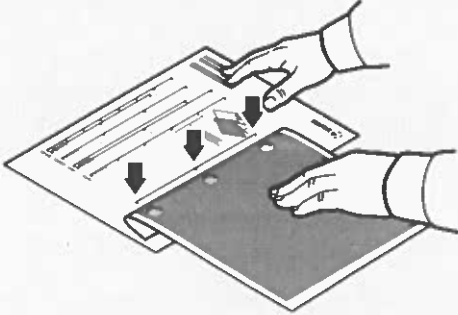
## Solving Print-Quality Problems

Problem	Solution
<p><b>Light Lines or Streaks</b></p> 	<ol style="list-style-type: none"> <li>1. Open the front cover.            </li> <li>2. To unlock the belt tension lever, on the left side of the printer, rotate the belt tension lever, then open the drum cartridge cover.            </li> <li>3. Push the cleaner into the printer until it stops. Move the LED printhead cleaner in and out of the printer two or three times. When finished, remove the cleaner.           <p><b>Note:</b> Do not use excessive force.</p>  </li> </ol> <p>If the problem persists, check if the drum cartridge is causing the problem. To check, switch the suspected drum cartridge with another drum cartridge of a different color. If the problem occurs where you move the suspected drum cartridge, replace the suspected drum cartridge.</p>

## Solving Print-Quality Problems (continued)

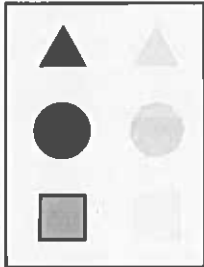
Problem	Solution
<p><b>Incomplete Fusing</b> Toner appears to be missing from the print, or rubs off easily.</p> 	<ol style="list-style-type: none"> <li>1. Verify that the paper you are using is the correct type for the printer and is properly loaded. For a complete list of recommended paper for your printer, go to: <ul style="list-style-type: none"> <li>– North America: <a href="http://www.xerox.com/rmlna">www.xerox.com/rmlna</a></li> <li>– Europe: <a href="http://www.xerox.com/rmleu">www.xerox.com/rmleu</a></li> </ul> </li> <li>2. Verify that the paper type is selected on the control panel and in the print driver.</li> <li>3. If the problem persists, do one of the following: <ul style="list-style-type: none"> <li>• For dedicated trays, log in as admin, touch <b>Device &gt; Tools &gt; Device Settings &gt; Paper Management &gt; Tray Settings</b>. Select the tray, touch <b>Edit</b>, then change the paper type.</li> </ul> <p><b>Note:</b> To change the size, type, or color of paper in a dedicated tray when the control panel is locked, log in as the system administrator.</p> <ul style="list-style-type: none"> <li>• For trays that are set to Fully Adjustable:</li> <li>• Trays 1–4 and 6: Open, then close the selected paper tray.</li> <li>• Tray 5: Remove, then reinsert the paper.</li> </ul> <p>The control panel prompts you to confirm or change the paper type.</p> <ul style="list-style-type: none"> <li>• At the touch screen, touch <b>Type</b>, then do one of the following: <ul style="list-style-type: none"> <li>• Select the correct paper type, then touch <b>Confirm</b>.</li> <li>• Select the next heavier type of paper, then touch <b>Confirm</b>.</li> </ul> </li> </ul> <p><b>Note:</b> Paper types from lightest to heaviest are:</p> <ul style="list-style-type: none"> <li>• For uncoated paper: Plain, Lightweight Cardstock, Cardstock, and Heavyweight Cardstock.</li> <li>• For coated paper: Lightweight Glossy Cardstock, Glossy Cardstock, and Heavyweight Glossy Cardstock.</li> </ul> </li> </ol>

## Solving Print-Quality Problems (continued)

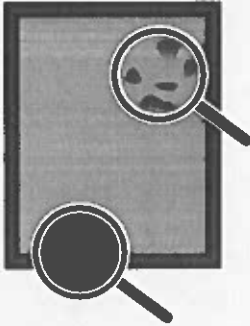
Problem	Solution
<p><b>Repeating Defects</b></p> <p>Spots or lines appear at regular intervals on the page in the direction that the paper moves through the printer or in non-printed areas.</p> 	<ol style="list-style-type: none"> <li>At the control panel, touch <b>Device &gt; Tools &gt; Troubleshooting &gt; Support Pages &gt; Repeating Defects Page &gt; Print</b>. The Repeating Defects Page prints with instructions for identifying defective units.</li> <li>To correct the problem, replace items identified on the Repeating Defects Page.</li> </ol>  <ol style="list-style-type: none"> <li>If you replaced the the transfer roller, reset the counter: <ul style="list-style-type: none"> <li>At the control panel, press <b>Log In</b>. Enter system administrator login information, then touch <b>Enter</b>. For details, refer to the <i>System Administrator Guide</i>.</li> <li>Touch <b>Device &gt; Tools &gt; Device Settings</b>.</li> <li>Scroll, then touch <b>Supplies &gt; Supply Counter Reset</b>.</li> <li>Touch <b>Second Bias Transfer Roll</b>.</li> <li>Touch <b>Reset Counter</b>.</li> <li>To close the pop-up window, touch <b>X</b>, touch <b>admin</b>, then select <b>Logout</b>.</li> </ul> </li> </ol>




## Solving Print-Quality Problems (continued)

Problem	Solution
<p><b>Offset Image</b></p> <p>The most common offset is toner that appears to be reprinted on the page and placed about 95 mm (3.75 in.) across the page in the direction that the paper moves through the printer.</p> <p><b>Note:</b> For a different distance, use the Repeating Defects Page to identify the cause.</p> 	<ol style="list-style-type: none"> <li>1. Verify that the paper you are using is the correct paper type for the printer and is properly loaded. For a complete list of recommended paper for your printer, go to: <ul style="list-style-type: none"> <li>– North America: <a href="http://www.xerox.com/rmlna">www.xerox.com/rmlna</a></li> <li>– Europe: <a href="http://www.xerox.com/rmleu">www.xerox.com/rmleu</a></li> </ul> </li> <li>2. Verify that the paper type is selected on the control panel and in the print driver. <b>Note:</b> To change the size, type, or color of paper in a dedicated tray when the control panel is locked, log in as the system administrator.</li> <li>3. If the problem continues, do one of the following: <ul style="list-style-type: none"> <li>• For dedicated trays, log in as admin, touch <b>Device &gt; Tools &gt; Device Settings &gt; Paper Management &gt; Tray Settings</b>. Select the tray, touch <b>Edit</b>, then change the paper type.</li> <li>• For trays that are set to Fully Adjustable: <ul style="list-style-type: none"> <li>• Trays 1–4 and 6: Open, then close the selected paper tray.</li> <li>• Tray 5: Remove, then reinsert the paper.</li> </ul> </li> </ul> <p>The control panel prompts you to confirm or change the paper type.</p> <ul style="list-style-type: none"> <li>• At the touch screen, touch <b>Type</b>, then do one of the following: <ul style="list-style-type: none"> <li>• Select the correct paper type, then touch <b>Confirm</b>.</li> <li>• Select the next heavier paper type, then touch <b>Confirm</b>.</li> </ul> </li> </ul> <p><b>Note:</b> Paper types from lightest to heaviest are:</p> <ul style="list-style-type: none"> <li>• For uncoated paper: Plain, Lightweight Cardstock, Cardstock, and Heavyweight Cardstock.</li> <li>• For coated paper: Lightweight Glossy Cardstock, Glossy Cardstock, and Heavyweight Glossy Cardstock.</li> </ul> <ul style="list-style-type: none"> <li>• To identify the cause, use the Repeating Defects Page. For details, refer to the previous page.</li> </ul> </li> </ol>

## Solving Print-Quality Problems (continued)

Problem	Solution
<p data-bbox="108 383 515 443"><b>Heavy Coverage Appears Mottled or Blotchy</b></p> <p data-bbox="108 454 323 483"><b>Blacks Appear Blue</b></p> 	<ol data-bbox="659 383 1425 633" style="list-style-type: none"><li>1. Verify that the paper you are using is the correct type for the printer and is properly loaded. For a complete list of recommended paper for your printer, go to:<ul data-bbox="691 495 1393 566" style="list-style-type: none"><li>– North America: <a href="http://www.xerox.com/rmlna">www.xerox.com/rmlna</a></li><li>– Europe: <a href="http://www.xerox.com/rmleu">www.xerox.com/rmleu</a></li></ul></li><li>2. Verify that the paper type is selected on the control panel and in the print driver.</li></ol> <p data-bbox="659 645 1090 674">If the problem continues, call for service.</p>
<p data-bbox="108 898 483 927"><b>Gray Tones Too Light or Too Dark</b></p> <p data-bbox="108 938 595 999">Gray tones appear faded or too dark on print or copy.</p>	<ol data-bbox="659 898 1449 1283" style="list-style-type: none"><li>1. Verify that the paper you are using is the correct type for the printer and is properly loaded. For a complete list of recommended paper for your printer, go to:<ul data-bbox="691 1010 1161 1081" style="list-style-type: none"><li>– North America: <a href="http://www.xerox.com/rmlna">www.xerox.com/rmlna</a></li><li>– Europe: <a href="http://www.xerox.com/rmleu">www.xerox.com/rmleu</a></li></ul></li><li>2. Verify that the paper type is selected on the control panel and in the print driver.</li><li>3. Adjust the lightness settings in the Copy settings or the print driver. For information about changing the Lightness setting in the PostScript print driver for your operating system, refer to the <i>Printing</i> chapter of the <i>User Guide</i>.</li></ol>

## Solving Print-Quality Problems (continued)

Problem	Solution
<p><b>Lines, Smudges, or Streaks</b></p> <p>Dark or light marks appear on the page in all tones or non-printed areas:</p> 	<ol style="list-style-type: none"> <li>1. Verify that the paper you are using is the correct type for the printer and is properly loaded. For a complete list of recommended paper for your printer, go to: <ul style="list-style-type: none"> <li>– North America: <a href="http://www.xerox.com/rmlna">www.xerox.com/rmlna</a></li> <li>– Europe: <a href="http://www.xerox.com/rmleu">www.xerox.com/rmleu</a></li> </ul> </li> <li>2. Verify that the paper type is selected on the control panel and in the print driver.</li> <li>3. If the problem persists, follow these steps: <ul style="list-style-type: none"> <li>• At the control panel, touch <b>Device &gt; Information Pages &gt; Troubleshooting Print Quality Page &gt; Print</b>. The Repeating Defects Page prints with instructions for identifying defective units.</li> <li>• To correct the problem, replace the items identified on the Repeating Defects Page.</li> </ul> </li> <li>4. If the problem continues, replace the transfer belt cleaner. If you replace the transfer belt cleaner, reset the counter: <ul style="list-style-type: none"> <li>• At the control panel, touch <b>Log In</b>. Enter system administrator login information, then touch <b>Done</b>. For details, refer to the <i>System Administrator Guide</i>.</li> <li>• Touch <b>Device &gt; Tools &gt; Device Settings</b>.</li> <li>• Scroll, then touch <b>Supplies &gt; Supply Counter Reset</b>.</li> <li>• Touch <b>Transfer Belt Cleaner</b>.</li> <li>• Touch <b>Confirm Reset</b>.</li> <li>• To close the pop-up window, touch <b>X</b>, touch <b>admin</b>, then select <b>Logout</b>.</li> </ul> </li> </ol>
<p><b>Poor Transparency Print Quality</b></p> <p>Print-quality defects are occurring on transparency film:</p> <ul style="list-style-type: none"> <li>• Light or dark spots</li> <li>• Smeared toner</li> <li>• Light bands on print</li> </ul>	<p>Use only Xerox® Transparencies.</p> <p><b>CAUTION:</b> Using non-Xerox® transparencies can cause print-quality problems or damage to the fuser. Damage caused by using unsupported media is not covered by the Xerox® Warranty, Service Agreement, or Total Satisfaction Guarantee.</p>

## Print-Quality Settings

The Windows PostScript print driver and the Macintosh print drivers provide the highest print-quality modes: You can change these settings in the print driver. Select the setting that is best suited for your print job.

### Print-Quality Mode

- **Enhanced** mode is the general-purpose mode for crisp, smooth-toned prints. Enhanced mode balances speed with quality.
- **High Resolution** mode is a high-quality mode that creates smooth-toned prints with fine lines and detail. High Resolution mode balances quality over speed.
- **Toner Saver** mode reduces the amount of toner used for print jobs and is useful for draft-quality output. Print quality is slightly lower than using Standard mode.

### Image Options

Image options controls how the printer uses lightness and contrast to produce your document. The Windows PostScript print driver and the Macintosh print drivers provide the widest range of controls on the Image Options tab.

- To locate Image Options in Windows, in the print driver, click the **Image Options** tab.
- To locate Image Options on Macintosh, in the Print window, in the print options list, click **Xerox Features**. Within Xerox Features, in the options list, click **Image Options**.

Supplies Usage

Supplies ordering information is located at [www.xerox.com/office/supplies](http://www.xerox.com/office/supplies).

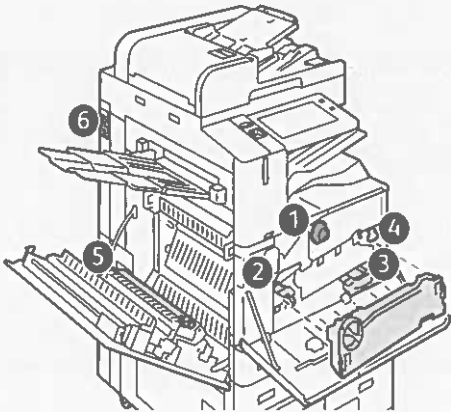
Consumables

1 Toner Cartridges



Black

Date Installed: Dec 19, 2023  
Reorder: 006R01770  
Estimated Pages Remaining: 34500  
(Based upon this toner cartridge's average coverage: 2%)



Routine Maintenance Items

2 Drum Cartridge



Black  
(R1)

Date Installed: Jan 1, 2021  
Reorder: 013R00686  
Estimated Pages Remaining: 179500  
(Based on average printer job size: 1 Pages)



3 Waste Container

Date Installed: Dec 15, 2023  
Reorder: 008R08102

OK



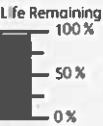
4 Transfer Belt Cleaner

Date Installed: Feb 29, 2024  
Reorder: 001R00623  
Estimated Pages Remaining: 150000



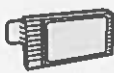
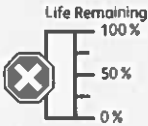
5 Second Bias Transfer Roller

Date Installed: Dec 15, 2023  
Reorder: 008R08103  
Estimated Pages Remaining: 347000



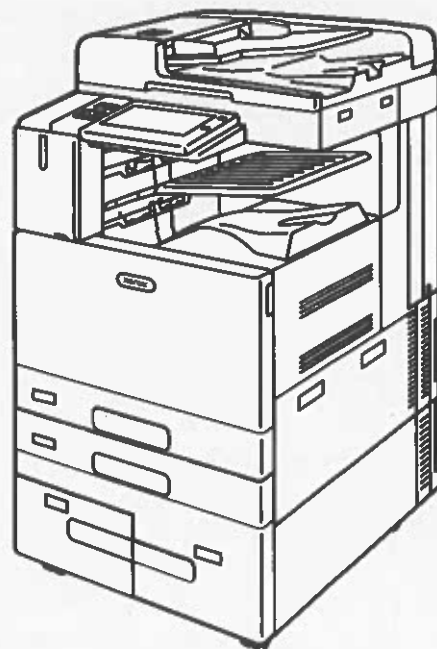
6 Fan Filter

Date Installed: Unknown  
Reorder:  
Estimated Pages Remaining: 0



# Xerox® AltaLink® B8200 Series Black-And-White Multifunction Printers

Productive, Scalable, Built-in Security



## XEROX® CONNECTKEY® TECHNOLOGY



Intuitive User  
Experience



Mobile and  
Cloud Ready



Comprehensive  
Security



Enables Managed  
Print Services



Gateway to New  
Possibilities



## Resident Fonts

Position	Font Name	Print Sample
1	Courier «Esc»(Symbol set«Esc»(s0p«pitch»h0s0b4099T	'ABCDEFGHabcdefgh0123456789&?!.,'
2	CG Times «Esc»(Symbol set«Esc»(s1p«size»v0s0b4101T	'ABCDEFGHabcdefgh0123456789&?!.,'
3	CG Times Bold «Esc»(Symbol set«Esc»(s1p«size»v0s3b4101T	'ABCDEFGHabcdefgh0123456789&?!.,'
4	CG Times Italic «Esc»(Symbol set«Esc»(s1p«size»v1s0b4101T	'ABCDEFGHabcdefgh0123456789&?!.,'
5	CG Times Bold Italic «Esc»(Symbol set«Esc»(s1p«size»v1s3b4101T	'ABCDEFGHabcdefgh0123456789&?!.,'
6	CG Omega «Esc»(Symbol set«Esc»(s1p«size»v0s0b4113T	'ABCDEFGHabcdefgh0123456789&?!.,'
7	CG Omega Bold «Esc»(Symbol set«Esc»(s1p«size»v0s3b4113T	'ABCDEFGHabcdefgh0123456789&?!.,'
8	CG Omega Italic «Esc»(Symbol set«Esc»(s1p«size»v1s0b4113T	'ABCDEFGHabcdefgh0123456789&?!.,'
9	CG Omega Bold Italic «Esc»(Symbol set«Esc»(s1p«size»v1s3b4113T	'ABCDEFGHabcdefgh0123456789&?!.,'
10	Coronet «Esc»(Symbol set«Esc»(s1p«size»v1s0b4116T	'ABCDEFGHabcdefgh0123456789&?!.,'
11	Clarendon Condensed «Esc»(Symbol set«Esc»(s1p«size»v4s3b4140T	'ABCDEFGHabcdefgh0123456789&?!.,'
12	Univers Medium «Esc»(Symbol set«Esc»(s1p«size»v0s0b4148T	'ABCDEFGHabcdefgh0123456789&?!.,'
13	Univers Bold «Esc»(Symbol set«Esc»(s1p«size»v0s3b4148T	'ABCDEFGHabcdefgh0123456789&?!.,'
14	Univers Medium Italic «Esc»(Symbol set«Esc»(s1p«size»v1s0b4148T	'ABCDEFGHabcdefgh0123456789&?!.,'
15	Univers Bold Italic «Esc»(Symbol set«Esc»(s1p«size»v1s3b4148T	'ABCDEFGHabcdefgh0123456789&?!.,'
16	Univers Medium Condensed «Esc»(Symbol set«Esc»(s1p«size»v4s0b4148T	'ABCDEFGHabcdefgh0123456789&?!.,'
17	Univers Bold Condensed «Esc»(Symbol set«Esc»(s1p«size»v4s3b4148T	'ABCDEFGHabcdefgh0123456789&?!.,'
18	Univers Medium Condensed Italic «Esc»(Symbol set«Esc»(s1p«size»v5s0b4148T	'ABCDEFGHabcdefgh0123456789&?!.,'

## Resident Fonts

Position	Font Name	Print Sample
19	Univers Bold Condensed Italic «Esc»(Symbol set«Esc»(s1p«size»v5s3b4148T	' <i><b>ABCDEFGHabcdefgh0123456789&amp;?!.,'</b></i>
20	Antique Olive «Esc»(Symbol set«Esc»(s1p«size»v0s0b4168T	' <i>ABCDEFGHabcdefgh0123456789&amp;?!.,'</i>
21	Antique Olive Bold «Esc»(Symbol set«Esc»(s1p«size»v0s3b4168T	' <i><b>ABCDEFGHabcdefgh0123456789&amp;?!.,'</b></i>
22	Antique Olive Italic «Esc»(Symbol set«Esc»(s1p«size»v1s0b4168T	' <i>ABCDEFGHabcdefgh0123456789&amp;?!.,'</i>
23	Garamond Antiqua «Esc»(Symbol set«Esc»(s1p«size»v0s0b4197T	' <i>ABCDEFGHabcdefgh0123456789&amp;?!.,'</i>
24	Garamond Halbfett «Esc»(Symbol set«Esc»(s1p«size»v0s3b4197T	' <i><b>ABCDEFGHabcdefgh0123456789&amp;?!.,'</b></i>
25	Garamond Kursiv «Esc»(Symbol set«Esc»(s1p«size»v1s0b4197T	' <i>ABCDEFGHabcdefgh0123456789&amp;?!.,'</i>
26	Garamond Kursiv Halbfett «Esc»(Symbol set«Esc»(s1p«size»v1s3b4197T	' <i><b>ABCDEFGHabcdefgh0123456789&amp;?!.,'</b></i>
27	Harigold «Esc»(Symbol set«Esc»(s1p«size»v0s0b4297T	' <i>ABCDEFGHabcdefgh0123456789&amp;?!.,'</i>
28	Albertus Medium «Esc»(Symbol set«Esc»(s1p«size»v0s1b4362T	' <i>ABCDEFGHabcdefgh0123456789&amp;?!.,'</i>
29	Albertus Extra Bold «Esc»(Symbol set«Esc»(s1p«size»v0s4b4362T	' <i><b>ABCDEFGHabcdefgh0123456789&amp;?!.,'</b></i>
30	Ryadh «Esc»(Symbol set«Esc»(s1p«size»v0s0b4859T	<i>ABCDEFGHabcdefgh0123456789&amp;?!.,'</i>
31	Ryadh Bold «Esc»(Symbol set«Esc»(s1p«size»v0s3b4859T	<i><b>ABCDEFGHabcdefgh0123456789&amp;?!.,'</b></i>
32	Malka «Esc»(Symbol set«Esc»(s1p«size»v0s0b16584T	<i>ABCDEFGHabcdefgh0123456789&amp;?!.,'</i>
33	Malka Bold «Esc»(Symbol set«Esc»(s1p«size»v0s3b16584T	<i><b>ABCDEFGHabcdefgh0123456789&amp;?!.,'</b></i>
34	Malka Italic «Esc»(Symbol set«Esc»(s1p«size»v1s0b16584T	<i>ABCDEFGHabcdefgh0123456789&amp;?!.,'</i>
35	Dorit «Esc»(Symbol set«Esc»(s1p«size»v0s0b16585T	<i>ABCDEFGHabcdefgh0123456789&amp;?!.,'</i>
36	Dorit Bold «Esc»(Symbol set«Esc»(s1p«size»v0s3b16585T	<i><b>ABCDEFGHabcdefgh0123456789&amp;?!.,'</b></i>



## Resident Fonts

Position	Font Name	Print Sample
37	Naamit «Esc»(Symbol set«Esc»(s1p«size»v0s0b16587T	ABCDEFGGabcdefg0123456789&?!.,'
38	Naamit Bold «Esc»(Symbol set«Esc»(s1p«size»v0s3b16587T	ABCDEFGGabcdefg0123456789&?!.,'
39	Arial «Esc»(Symbol set«Esc»(s1p«size»v0s0b16602T	'ABCDEFGGabcdefg0123456789&?!.,'
40	Arial Bold «Esc»(Symbol set«Esc»(s1p«size»v0s3b16602T	'ABCDEFGGabcdefg0123456789&?!.,'
41	Arial Italic «Esc»(Symbol set«Esc»(s1p«size»v1s0b16602T	'ABCDEFGGabcdefg0123456789&?!.,'
42	Arial Bold Italic «Esc»(Symbol set«Esc»(s1p«size»v1s3b16602T	'ABCDEFGGabcdefg0123456789&?!.,'
43	Times New Roman «Esc»(Symbol set«Esc»(s1p«size»v0s0b16901T	'ABCDEFGGabcdefg0123456789&?!.,'
44	Times New Roman Bold «Esc»(Symbol set«Esc»(s1p«size»v0s3b16901T	'ABCDEFGGabcdefg0123456789&?!.,'
45	Times New Roman Italic «Esc»(Symbol set«Esc»(s1p«size»v1s0b16901T	'ABCDEFGGabcdefg0123456789&?!.,'
46	Times New Roman Bold Italic «Esc»(Symbol set«Esc»(s1p«size»v1s3b16901T	'ABCDEFGGabcdefg0123456789&?!.,'
47	Helvetica «Esc»(Symbol set«Esc»(s1p«size»v0s0b24580T	'ABCDEFGGabcdefg0123456789&?!.,'
48	Helvetica Bold «Esc»(Symbol set«Esc»(s1p«size»v0s3b24580T	'ABCDEFGGabcdefg0123456789&?!.,'
49	Helvetica Oblique «Esc»(Symbol set«Esc»(s1p«size»v1s0b24580T	'ABCDEFGGabcdefg0123456789&?!.,'
50	Helvetica Bold Oblique «Esc»(Symbol set«Esc»(s1p«size»v1s3b24580T	'ABCDEFGGabcdefg0123456789&?!.,'
51	Helvetica Narrow «Esc»(Symbol set«Esc»(s1p«size»v4s0b24580T	'ABCDEFGGabcdefg0123456789&?!.,'
52	Helvetica Narrow Bold «Esc»(Symbol set«Esc»(s1p«size»v4s3b24580T	'ABCDEFGGabcdefg0123456789&?!.,'
53	Helvetica Narrow Oblique «Esc»(Symbol set«Esc»(s1p«size»v5s0b24580T	'ABCDEFGGabcdefg0123456789&?!.,'
54	Helvetica Narrow Bold Oblique «Esc»(Symbol set«Esc»(s1p«size»v5s3b24580T	'ABCDEFGGabcdefg0123456789&?!.,'

## Resident Fonts

Position	Font Name	Print Sample
55	Palatino Roman «Esc»(Symbol set«Esc»(s1p«size»v0s0b24591T	'ABCDEFGFGabcdefg0123456789&?!.,'
56	Palatino Bold «Esc»(Symbol set«Esc»(s1p«size»v0s3b24591T	'ABCDEFGFGabcdefg0123456789&?!.,'
57	Palatino Italic «Esc»(Symbol set«Esc»(s1p«size»v1s0b24591T	'ABCDEFGFGabcdefg0123456789&?!.,'
58	Palatino Bold Italic «Esc»(Symbol set«Esc»(s1p«size»v1s3b24591T	'ABCDEFGFGabcdefg0123456789&?!.,'
59	ITC Avant Garde Book «Esc»(Symbol set«Esc»(s1p«size»v0s0b24607T	'ABCDEFGFGabcdefg0123456789&?!.,'
60	ITC Avant Garde DemiBold «Esc»(Symbol set«Esc»(s1p«size»v0s2b24607T	'ABCDEFGFGabcdefg0123456789&?!.,'
61	ITC Avant Garde Book Oblique «Esc»(Symbol set«Esc»(s1p«size»v1s0b24607T	'ABCDEFGFGabcdefg0123456789&?!.,'
62	ITC Avant Garde DemiBold Oblique «Esc»(Symbol set«Esc»(s1p«size»v1s2b24607T	'ABCDEFGFGabcdefg0123456789&?!.,'
63	ITC Bookman Light «Esc»(Symbol set«Esc»(s1p«size»v0s-3b24623T	'ABCDEFGFGabcdefg0123456789&?!.,'
64	ITC Bookman DemiBold «Esc»(Symbol set«Esc»(s1p«size»v0s2b24623T	'ABCDEFGFGabcdefg0123456789&?!.,'
65	ITC Bookman Light Italic «Esc»(Symbol set«Esc»(s1p«size»v1s-3b24623T	'ABCDEFGFGabcdefg0123456789&?!.,'
66	ITC Bookman DemiBold Italic «Esc»(Symbol set«Esc»(s1p«size»v1s2b24623T	'ABCDEFGFGabcdefg0123456789&?!.,'
67	New Century Schoolbook Roman «Esc»(Symbol set«Esc»(s1p«size»v0s0b24703T	'ABCDEFGFGabcdefg0123456789&?!.,'
68	New Century Schoolbook Bold «Esc»(Symbol set«Esc»(s1p«size»v0s3b24703T	'ABCDEFGFGabcdefg0123456789&?!.,'
69	New Century Schoolbook Italic «Esc»(Symbol set«Esc»(s1p«size»v1s0b24703T	'ABCDEFGFGabcdefg0123456789&?!.,'
70	New Century Schoolbook Bold Ital «Esc»(Symbol set«Esc»(s1p«size»v1s3b24703T	'ABCDEFGFGabcdefg0123456789&?!.,'
71	Times Roman «Esc»(Symbol set«Esc»(s1p«size»v0s0b25093T	'ABCDEFGFGabcdefg0123456789&?!.,'
72	Times Roman Bold «Esc»(Symbol set«Esc»(s1p«size»v0s3b25093T	'ABCDEFGFGabcdefg0123456789&?!.,'

[illegible]

## Resident Fonts

Position	Font Name	Print Sample
91	Courier PS Bold «Esc»(Symbol set«Esc»(s0p«pitch»h0s3b24579T	' <b>ABCDEFGGabcdefg0123456789&amp;?!.,'</b>
92	Courier PS Oblique «Esc»(Symbol set«Esc»(s0p«pitch»h1s0b24579T	' <i>ABCDEFGGabcdefg0123456789&amp;?!.,'</i>
93	Courier PS Bold Oblique «Esc»(Symbol set«Esc»(s0p«pitch»h1s3b24579T	' <b><i>ABCDEFGGabcdefg0123456789&amp;?!.,'</i></b>
93	Line Printer «Esc»(8U«Esc»(s0p16.67h8.48v0s0b0T	' <b>ABCDEFGGabcdefg0123456789&amp;?!.,'</b>