

Common User Data

Machine Name: Xerox VersaLink B625 MFP (AC:17:78)
IP Address: 10.61.9.162
Machine Serial Number: 5321605321
Fax Line 1:
Machine URL: https://10.61.9.162
Machine Activation Date: Jan 01, 1970 00:00:00
Total Impressions: 80

Machine Profile

Xerox Asset Tag:
Customer Asset Tag:
Service Phone Number:
Customer Support Number:
Supplies Phone Number:
System Administrator: System Administrator name not set
Machine Location: machine location not set
Managed By
Primary MB Server:

Machine Hardware

Fax Card: not present
Extended Fax Card: not present
Fax Card Memory Size: 0 MB
Foreign Interface Card: not present
Device RAM Size: 3904 MB
Device Storage Size: used= 3495MB/total=13925MB (eMMC)
EPC Memory Size: 187 MB
Productivity Kit: Not Installed
Finisher Type: Simple Catch Tray
Finisher Punch: None
Finisher Folder: not present
Multi-feed Detection Kit: Not Installed

General Setup

Remote Services: Enabled
Remote Software Download: Enabled
Remote Services Trans. Time: 09:17
Xerox Workplace Cloud: Disabled
E-mail Alerts: Disabled
Service Plan: PagePack
Geographic Region: unknown
GMT Offset: 00:00
Cloning Installation: Allowed (Encrypted Files Only)
File Sharing: Enabled
JBIG2: Lossless
Energy Saver
Deep Sleep: Enabled
Energy Saver Mode: Job Activated
Smart Proximity Sensor
Wake on Arrival: Not Available
Sleep on Departure:

Software Versions

Device Software: 121.025.004.10010
Patch Version: None
Network Controller: 121.025.10010
UI Panel Firmware: 6.1
Marking Engine: 221.163
Document Feeder: 221.163
Finisher: 000.000.000
Fax: 000.000.000
Scanner: 221.163
Machine Upgrades:
Last Successful Upgrade: April 16, 2024 12:39:50

Media Trays

Tray 1: Plain, White and Letter (8.5 x 11")
Tray 2: Plain, White and Letter (8.5 x 11")
Bypass Tray: Plain, White and Letter (8.5 x 11")

Installed Options

PS: Installed

Connectivity

Mobile Workflows

AirPrint Printing: Enabled
Mopria Printing Discovery: Enabled
AirPrint / Mopria Scanning Authentication: Enabled
Physical Connections

USB Settings
USB Type A Ports: All Enabled
Wired:
Ethernet MAC Address: Enabled
Ethernet Speed/Duplex Setting: 78:8c:77:ac:17:78 auto
Wireless: Disabled

Wireless MAC Address:
Network Name (SSID):
BSSID:
Security Mode:
Encryption Algorithm:
Status:
Wi-Fi Direct: Enabled
Wireless Hardware: Not Installed

Wi-Fi Protected Setup (WPS) Name:
Access Point (SSID):
Show Password on Device Touch Screen: Enabled
NFC: Enabled
iBeacon (Bluetooth®) for AirPrint Di...: Not Installed
iBeacon Hardware:
Bluetooth Device Address:
iBeacon IP Address:

Protocols

TCP/IPv4: Enabled
IP Address: 10.61.9.162
Subnet Mask: 255.255.255.0
Router/Gateway: 10.61.9.1
Automatic Addressing: DHCP
DHCP Server: 10.61.13.224
DHCP Lease Expiration: Tue Apr 23 18:40:39 2024
BOOTP Broadcast: Disabled
Self Assigned Address State: Enabled
Self Assigned Address:

TCP/IPv6: Enabled
Link Local Address: fe80::7a8c:77ff:feac:1778
Use Router Supplied Prefix: Enabled
Stateless Global Address 1: fd00:0:2:109:7a8c:77ff:feac:1778
Stateless Global Address 2:
Manual Address:
DHCP Addressing: Use DHCP as directed by a router
DHCP Address: fd00:0:2:109:6f1a:52e0:da81:1ae1
Default Gateway: fe80::8afc:5dff:fe75:e282
DUID (DHCP Unique Identifier): 000100012db1304c788c77ac1778

DNS Settings:
Requested Host Name: XR XU788c77ac1778
Verified Host Name:
Requested Domain Name:
Verified Domain Name:
Multicast DNS: Enabled
Release DHCP Leases and DNS Registrat...: Disabled
Primary DNS Server: 10.61.7.15
Prefer IPv6 DNS over IPv4: Enabled

Bonjour:
Bonjour Printer Name: Xerox VersaLink B625 MFP (AC:17:78)
HTTP: Enabled
Force Traffic over Secure Connection (H... IPP: Enabled

SNMP:
SNMP v1/v2: Enabled
SNMP v3: Disabled
LPR/LPD: Enabled
Raw IP Printing: Enabled

LDAP:
LDAP Server 1 Primary LDAP Address: 0.0.0.0:389
LDAP Server 1 Search Directory Root:
LDAP Server 1 Secure Connection (LDA...: Disabled
LDAP Server 1 Validate Server Certificate...: Disabled

SMTP:
SMTP Server: 0.0.0.0:25
Connect Encryption (TLS): No Encryption
Validate Server Certificate (TLS):

Protocols (cont.)

POP3
 POP3 Server: 0.0.0.0:110
 POP3 Secure Connection (TLS): Disabled
 E-mail Address:
 NTP: Enabled
 FTP Client: Enabled
 FTP Client Mode: Passive
 Web Services on Device: Enabled

Apps

Printing

Banner Sheet: Enabled
 Error Sheets: Enabled
 Paper Substitution: Enabled
 Tray Priority: 1,2,5
 PostScript Level: 3
 Version: 3021.101

PCL
 Version: 6
 Font Name: Courier
 Custom Color Tables: Enabled
 Label: Not Installed

Embedded Fax:

not installed

Server Fax:

Enabled
 Repository Protocol: FTP
 Repository Server: 10.61.23.93:21
 Repository Document Path: /

Workflow Scanning:

Enabled

Email:

Enabled

Scan to Mailbox:

Disabled
 Storage Capacity (MB): 672 MB
 Storage Used (MB): 79 MB

Cleanup of Public Folders: Enabled
 Cleanup of Created Folders: Enabled
 Cleanup Time: Daily

Scan to Home:

Disabled

Scan To:

Enabled

Print From:

Cloud Services: Disabled

Accounting

Accounting Mode: None
 Network Accounting: Disabled

Security

Authentication Configuration

Machine UI Authentication: Locally on the Device
 Home: Unlocked
 Jobs: Unlocked
 Device: Unlocked

Device Website Authentication: Locally on the Device
 Authorization: Locally on the Device

Retrieve E-mail from LDAP: Enabled

Authentication Server:

Kerberos

Xerox Secure Access:

Disabled

Audit Log:

Enabled

IP Sec:

Disabled

IP Filtering:

Disabled

Security Certificates

Machine Certificate: Signed

Root Certificates Installed: 54

802.1x:

Disabled

Job Data Removal:

Scheduled: Disabled

FIPS 140-3:

Disabled

TLS:

TLS 1.1 and TLS 1.2

TLS Hash: SHA-1, SHA-256 and above

Trellix Embedded Control:

Enhanced Security

Common User Data

Machine Name: Xerox VersaLink B625 MFP (AC:17.78)
 IP Address: 10.61.9.162
 Machine Serial Number: 5321605321
 Fax Line 1:
 Machine URL: https://10.61.9.162
 Machine Activation Date: Jan 01, 1970 00:00:00
 Total Impressions: 82

Machine Profile

Xerox Asset Tag:
 Customer Asset Tag:
 Service Phone Number:
 Customer Support Number:
 Supplies Phone Number:
 System Administrator: System Administrator name not set
 Machine Location: machine location not set
Managed By
 Primary MB Server:

Machine Hardware

Fax Card: not present
 Extended Fax Card: not present
 Fax Card Memory Size: 0 MB
 Foreign Interface Card: not present
 Device RAM Size: 3904 MB
 Device Storage Size: used=3496MB/total=1.3925MB (eMMC)
 EPC Memory Size: 187 MB
 Productivity Kit: Not Installed
 Finisher Type: Simple Catch Tray
 Finisher Punch: None
 Finisher Folder: not present
 Multi-feed Detection Kit: Not Installed

General Setup

Remote Services: Enabled
 Remote Software Download: Enabled
 Remote Services Trans. Time: 09:17
 Xerox Workplace Cloud: Disabled
 E-mail Alerts: Disabled
 Service Plan: PagePack
 Geographic Region: unknown
 Startup Config Report: Enabled
 GMT Offset: 00:00
 Cloning Installation: Allowed (Encrypted Files Only)
 Allow Print Submission of Clone Files: Disabled
 File Sharing: Enabled
 JBIG2: Lossless
Energy Saver
 Deep Sleep: Enabled
 Energy Saver Mode: Job Activated
 Sleep Mode Timer: 30 minutes
 Auto-Off: Disabled

Software Versions

Device Software: 121.025.004.10010
 Patch Version: None
 Network Controller: 121.025.10010
 UI Panel Firmware: 6.1
 User Interface: 121.025.10010
 Marking Engine: 221.163
 Copy Controller: 121.025.10010
 Document Feeder: 221.163
 Finisher: 000.000.000
 Fax: 000.000.000
 OS: 221.163
 Scanner: 221.163
 Software Upgrade: 004.015
 ALTBOT Software Upgrade: 004.015
 Tray 2: A16.47_B2.3

Machine Upgrades:

Last Successful Upgrade: April 16, 2024 12:39:50
 Scheduled Auto Upgrades: Disabled
 Auto Upgrade Start Time: Daily
 Auto Upgrade Server: 0.0.0.0:21

Media Trays

Tray 1: Plain, White and Letter (8.5 x 11")
 Tray 2: Plain, White and Letter (8.5 x 11")
 Bypass Tray: Plain, White and Letter (8.5 x 11")

Connectivity

Mobile Workflows

AirPrint Printing: Enabled
 Mopria Printing Discovery: Enabled
 AirPrint / Mopria Scanning: Enabled
 Authentication: Disabled
 Universal Print: Disabled
 Universal Print Registration Status: Not Registered

Physical Connections

USB Settings
 Usb Type A Ports: All Enabled
 Printing Timeout: 5 seconds
Wired:
 Ethernet MAC Address: Enabled
 Ethernet Speed/Duplex Setting: 78:8c:77:ac:17:78
 auto
 Disabled

Wireless:

Wireless MAC Address:
 Network Name (SSID):
 BSSID:
 Security Mode:
 Encryption Algorithm:
 Status:
Wi-Fi Direct: Enabled
 Not Installed
 Wireless Hardware:
 Wi-Fi Protected Setup (WPS) Name:
 Connection Method:
 Subnet Prefix Address:
 Access Point (SSID):
 Show Password on Device Touch Screen:
NFC:
 iBeacon (Bluetooth®) for AirPrint Di... Enabled
 iBeacon Hardware: Enabled
 Bluetooth Device Address: Not Installed
 iBeacon IP Address:

Protocols

TCP/IPV4:

Enabled
 IP Address: 10.61.9.162
 Subnet Mask: 255.255.255.0
 Router/Gateway: 10.61.9.1
 Automatic Addressing: DHCP
 DHCP Server: 10.61.13.224
 DHCP Lease Expiration: Tue Apr 23 18:40:39 2024
 BOOTP Broadcast: Disabled
 Self Assigned Address State: Enabled
 Self Assigned Address:

TCP/IPV6:

Enabled
 Link Local Address: fe80::7a8c:77ff:fe0c:1778
 Use Router Supplied Prefix: Enabled
 Stateless Global Address 1: fd00:0:2:109:7a8c:77ff:fe0c:1778
 Stateless Global Address 2:
 Manual Address:
 DHCP Addressing: Use DHCP as directed by a router
 DHCP Address: fd00:0:2:109:6f1a:52e0:da81:1ae1
 Default Gateway: fe80::8afc:5dff:fe75:e282
 DUID (DHCP Unique Identifier): 000100012ab1304c788c77ac1778

DNS Settings:

Requested Host Name: XR XU788c77ac1778
 Verified Host Name:
 Requested Domain Name:
 Verified Domain Name:
 Multicast DNS: Enabled
 Release DHCP Leases and DNS Registrati... Disabled
 Primary DNS Server: 10.61.7.15
 Alternate DNS Server 1: 10.61.13.20
 Alternate DNS Server 2: =
 DNS Connection Timeout: 5
 Append Device Domain: Enabled
 Append Parent Domains: Disabled
 DNS Domain Search List: XEROXQA.COM
 Prefer IPv6 DNS over IPv4: Enabled

Installed Options

PS: Installed

Protocols (cont.)

Bonjour:	
Bonjour Printer Name:	Xerox VersaLink B625 MFP (AC:17:7B)
HTTP:	
Port Number:	80
Force Traffic over Secure Connection (H...):	Yes
Secure HTTP Port Number:	443
Proxy Server:	Disabled
Proxy Server Address:	0.0.0.0:8080
IPP:	Enabled
Secure IPP Mode:	IPP and Secure IPPS
IPP Network Path:	http://10.61.9.162:631
SNMP	
SNMP v1/v2:	Enabled
SNMP v3:	Disabled
LPR/LPD:	
Port Number:	515
PDL Switching:	Disabled
PDL Banner Override:	Disabled
Raw IP Printing:	
Port Number 1:	9100
Bidirectional:	Disabled
End of Job Timeout:	300
PDL Switching:	Disabled
LDAP	
LDAP Server 1 Friendly Name:	
LDAP Server 1 Primary LDAP Address:	0.0.0.0:389
LDAP Server 1 Alternate LDAP Address:	0.0.0.0:389
LDAP Server 1 Search Directory Root:	
LDAP Server 1 Secure Connection (LDA...):	Disabled
LDAP Server 1 Validate Server Certificate...:	Disabled
SMTP	
SMTP Server:	0.0.0.0:25
Connect Encryption (TLS):	No Encryption
Validate Server Certificate (TLS):	
Max Message Size (KB):	10240
Number of Fragments:	1
Total Job Size (KB):	300000
Job Splitting Boundary:	Page Boundary
Credentials for Auto E-mails:	None
Credentials for Walkup User:	None
POP3	
POP3 Server:	0.0.0.0:110
POP3 Secure Connection (TLS):	Disabled
E-mail Address:	
Receipt of E-mail via POP3:	Disabled
Send Confirm on Request:	Enabled
Incoming E-mail cover sheet:	Enabled
NTP:	
Primary Server:	0.0.0.0:123
Alternate Server:	0.0.0.0:123
SLP:	
FTP Client:	Enabled
FTP Client Mode:	Passive
Web Services on Device:	
WS-Discovery:	Enabled
WS-Discovery Multicast:	Enabled
WS-Print:	Enabled
WS-Scan:	Enabled
Web Services	
Copy Submission:	Enabled
Digital Certificate Management and Secur...:	Enabled
Extensible Service Registration:	Enabled
Job Limits:	Enabled
Job Management Extension:	Enabled
Device Configuration:	Enabled
Scan Submission:	Enabled
Scan Workflow Management:	Enabled
Session Data:	Enabled
User Interface Configuration:	Enabled
EIP Proxy Configuration:	Enabled
Xerox Secure Access:	Disabled
EIP SNMP Configuration:	Enabled
Print Submission:	Enabled
Scan Template Mgmt:	Enabled
Mass Storage Access:	Enabled
Card Reader Access:	Enabled
Authentication & Accounting Configur...:	Enabled
Export Audit Log:	Enabled
Trellix Embedded Control:	Enabled

Apps

Printing	
Banner Sheet:	Enabled
Sys/Start Job:	Disabled
Delete Held Jobs After:	3 Day(s) 0 Hour(s) 0 Minute(s)
Error Sheets:	Enabled
Paper Substitution:	Enabled
Tray Priority:	1,2,5
Default Copies:	1
Default Job Type:	Normal Print
Default Paper Size:	x=210mm, y=297mm
Default Paper Color:	White
Default 2 Sided Printing:	1 Sided
Default Output Tray:	Center Tray
Default Output Color:	Black & White
Default Colated Sets:	Enabled
Default Stapling:	Not Available
Offsetting Between Jobs:	No Offset Between Jobs
PostScript Level:	Installed
Version:	3
Image Quality:	3021.101 Enhanced
PCL	
Version:	6
Pitch Size:	10.00
Point Size:	12.00
Font Name:	Courier
Lines Per Page:	64
Custom Color Tables:	Enabled
Label:	Not Installed
Embedded Fax:	
Fax Line1:	not installed
Fax Line2:	
Server Fax:	
Confirmation Sheet:	Enabled
Delay Start:	On
Repository Protocol:	Disabled
Repository Server:	FTP
Repository Document Path:	10.61.23.93:21
Workflow Scanning:	
Confirmation Sheet:	Enabled
Default Repository Protocol:	Errors Only
Default Repository Server:	FTP
Default Repository Document Path:	10.61.23.93:21
Default Repository Login Credentials:	/
Alt1 Repository Protocol:	Device
Alt1 Repository Server:	FTP
Alt1 Repository Document Path:	0.0.0.0:0
Alt1 Repository Login Credentials:	Device
Workflow Pool Protocol:	FTP
Workflow Pool Server:	0.0.0.0:0
Workflow Pool Path:	
Email:	
Default From Address:	Enabled
Confirmation Sheet:	Errors Only
Auto Send to Self:	Disabled
E-mail Security:	Disabled
Scan to Mailbox:	
View Mailboxes by Default:	Enabled
Storage Capacity (MB):	672 MB
Storage Used (MB):	79 MB
Cleanup of Public Folders:	Enabled
Cleanup of Created Folders:	Enabled
Cleanup Time:	Daily
Scan to Home:	
Friendly Name:	
Workflow Name:	
Auto Create Subdir:	Disabled
Append User Name to Path:	Disabled
Auto Create User Name Dir:	Disabled
Scan To:	
Cloud Services:	Enabled
Print From:	
Saved Jobs for Reprint:	Disabled
Print From USB:	Enabled
Print From MailBox:	Enabled
Cloud Services:	Disabled

Accounting

Accounting Mode: None
 Network Accounting: Disabled

Security**Authentication Configuration**

Machine UI Authentication: Locally on the Device
 Home: Unlocked
 Jobs: Unlocked
 Device: Unlocked
 Device Website Authentication: Locally on the Device
 Authorization: Locally on the Device
 Retrieve E-mail from LDAP: Enabled

Authentication Server:

Kerberos Primary Address: Kerberos
 Kerberos Primary Realm: Kerberos
 Kerberos Primary Address: 0.0.0.0:88
 Kerberos Alt 1 Realm: Kerberos
 Kerberos Alt 1 Address: 0.0.0.0:88
 SMB NT Domain: Kerberos
 SMB Alt 1 NT Domain: Kerberos
 Smartcard Ctl Server: 0.0.0.0:443
 Smartcard Ctl Domain: Kerberos
 SmartCard OCSP URL: Kerberos
 Card Reader Upgrade Policy: Enabled
 Card Reader Firmware Version: Kerberos

Xerox Secure Access:

Secure Access Server: Disabled
 Secure Access Path: 0.0.0.0:443

Audit Log:

Enabled

IP Sec:

Disabled

IP Filtering:

Disabled

Security Certificates

Machine Certificate: Signed

Root Certificates Installed: 54

802.1x: Disabled

Job Data Removal:

Scheduled: Disabled

Scheduled Frequency: Monthly

FIPS 140-3: Disabled

TLS: TLS 1.1 and TLS 1.2

TLS Hash: SHA-1, SHA-256 and above

Trellix Embedded Control: Enhanced Security

Extensible Service Setup

Third Generation Browser: X3G_3.24.23_2.40.5_012_01.00.00
 Widget Version: v1.3.17 c8 20140613
 Widget Version: v2.5.04 g9 20240123

Billing Summary

System Information

Machine Name: Xerox VersaLink B625 MFP (AC:17:78)
 Machine Serial Number: 5321605321
 Power On Impressions: 19

Software Versions
 Device Software: 121.025.004.10010
 Patch Version: None
 Network Controller: 121.025.10010
 UI Panel Firmware: 6.1
 Marking Engine: 221.163
 Document Feeder: 221.163
 Finisher: 000.000.000
 Fax: 000.000.000
 Scanner: 221.163

Billing Meters

Fax

Embedded Fax Images Sent: 0
 Embedded Fax Impressions: 0

Copy

Black Copied Impressions: 6

Print

Black Printed Impressions: 73

Scan

Network Scanning Images Sent: 16
 E-mail Images Sent: 0

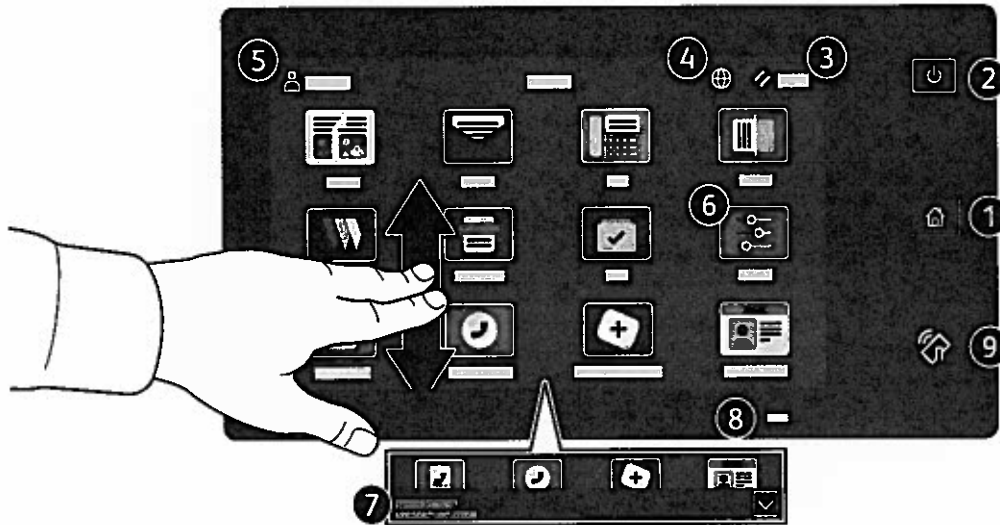
Device Totals

Total Impressions: 85

Plain Paper: 61

Control Panel

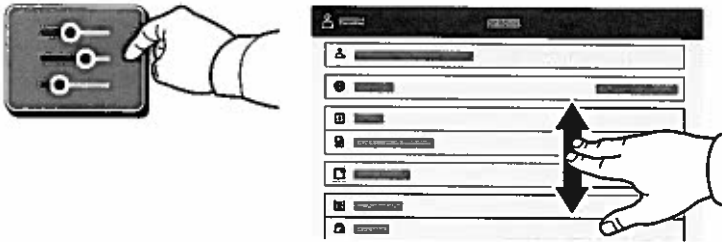
Available apps can vary based on your printer setup. For details about apps and features, refer to the *User Guide*.



- 1 Home returns to the main app screen.
- 2 Power/Wake starts the printer or provides options to sleep, restart or power off the printer.
- 3 Reset restores settings to their default values in all apps.
- 4 Language provides choice of screen languages.
- 5 Log In provides special access to tools and settings.
- 6 Device app provides access to printer information and settings.
- 7 Notification banner shows printer status and warnings. To see all notifications, touch the banner. To close the banner, touch the down arrow.
- 8 Status LED indicates printer status. For detailed information, refer to the *User Guide*.
- 9 NFC Area allows pairing with a mobile device to print or scan from an app.

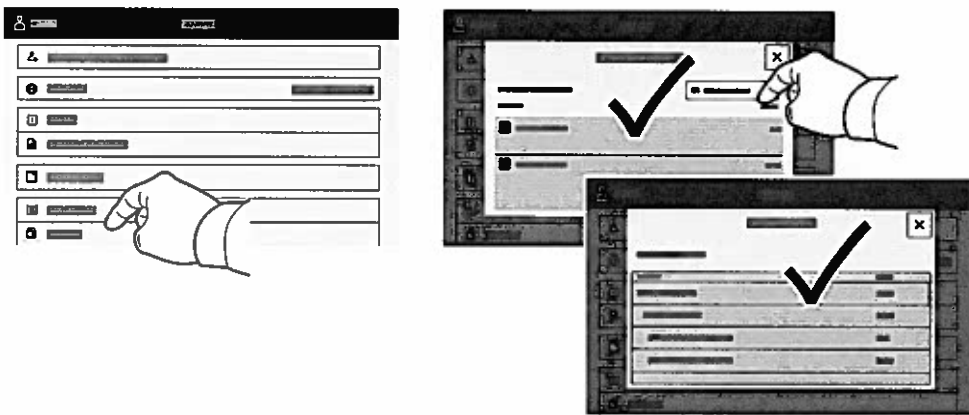
Device app

The Device app provides access to supplies status, printer information, and settings. Some menus and settings require log in with the administrator name and password.



Billing and Usage Information

In the Device features menu, to view basic impression counts, touch **Billing/Usage**. To view detailed usage counts, touch **Usage Counters**. The list provides detailed impression count categories.

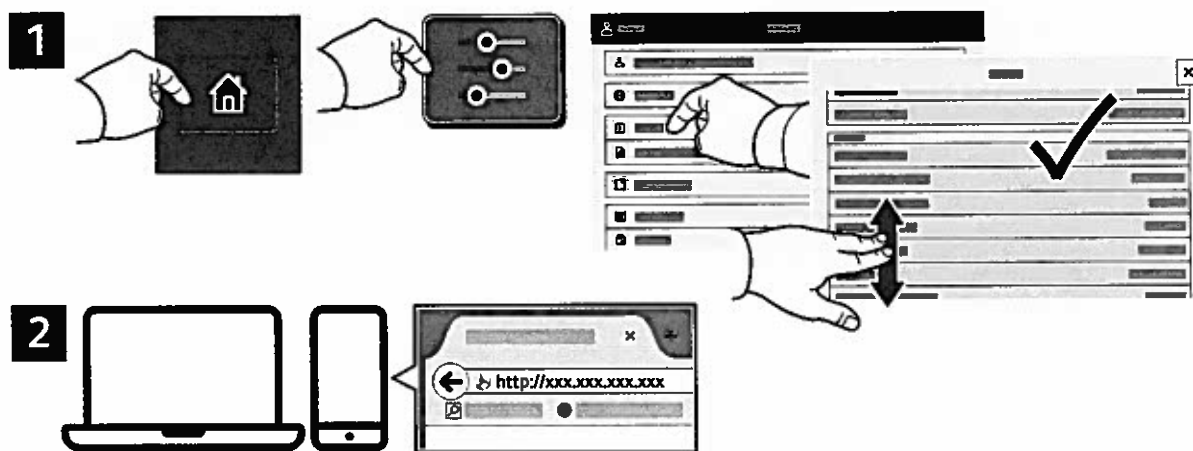


Embedded Web Server

The Xerox® Embedded Web Server enables you to access printer configuration details, paper and supplies status, job status, and diagnostic functions over a network. You can also manage fax, email, and address books.

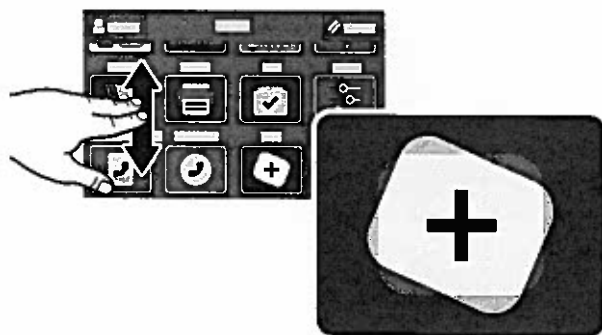
To connect, in a Web browser, type the printer IP address. The network IPv4 address is available on the control panel touch screen. Touch **Device app** > **About**, then scroll down.

For details on using the Embedded Web Server, refer to the *User Guide* located on Xerox.com.



App Gallery

The Xerox App Gallery has a growing collection of productivity apps that you can install on your printer. Find the app on your home screen and create your login directly, or go to www.xerox.com/appgallery to log in and add your device. To simplify app installation, use the same name for your app gallery login credentials that you used for the printer login.

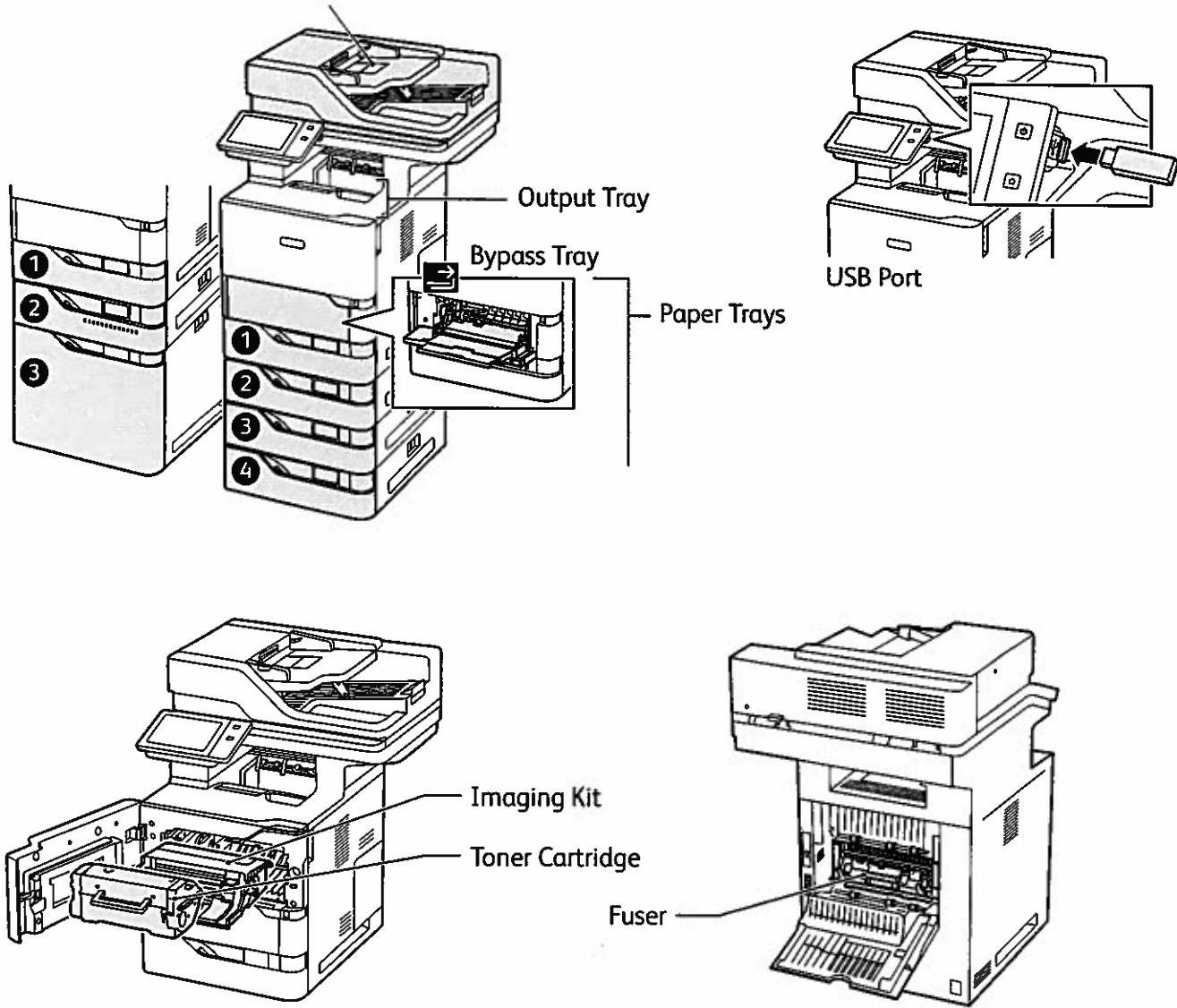


www.xerox.com/appgallery

Printer Tour

Optional accessories can be part of your printer setup. For details, refer to the *User Guide*.

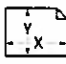
Single-Pass Duplex Automatic Document Feeder (DADF)





Copying

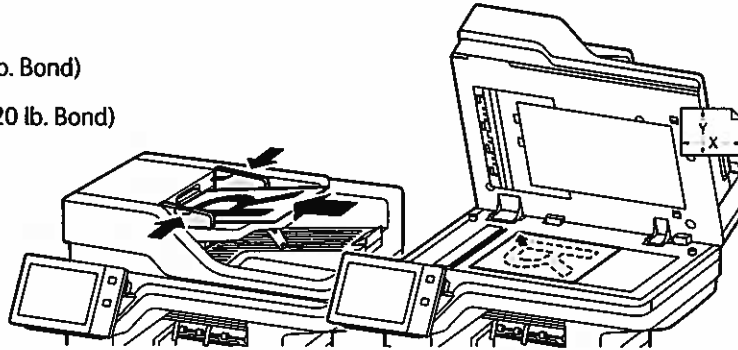
For details, refer to the *User Guide*.

1

 X: 127–356 mm (4.88–14 in.)
Y: 76–216 mm (2–8.5 in.)

 52–120 g/m²
(14 lb. Text–32 lb. Bond)

 ≤100 (75 g/m², 20 lb. Bond)



X: 25–355.6 mm (.98–14 in.)
Y: 25–215.9 mm (.98–8.5 in.)

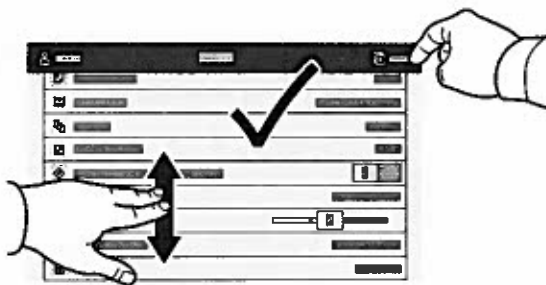
Load the original documents.

2

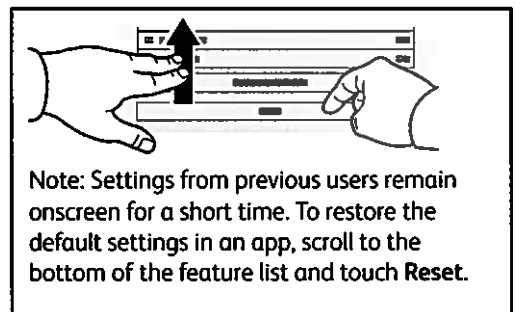


Touch **Copy**, then and select the number of copies.

3



Select feature settings from the list, then touch **Start**.



Paper Handling

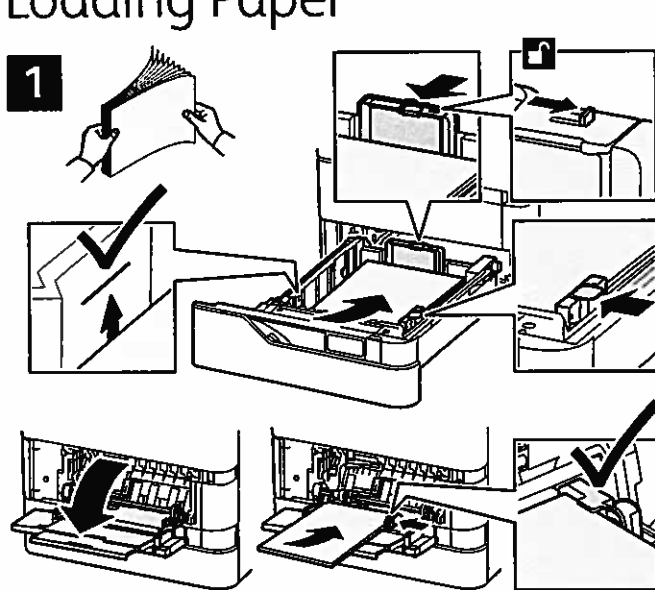
For a complete list of paper that works with your printer, see the Recommended Media List at:

www.xerox.com/rmlna (U. S. and Canada)

www.xerox.com/rmleu (Europe)

For details about trays and paper, refer to the *User Guide*.

Loading Paper



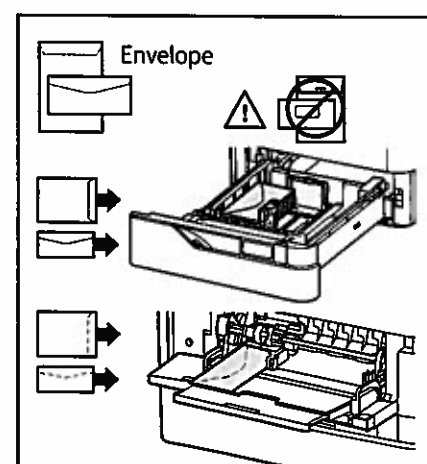
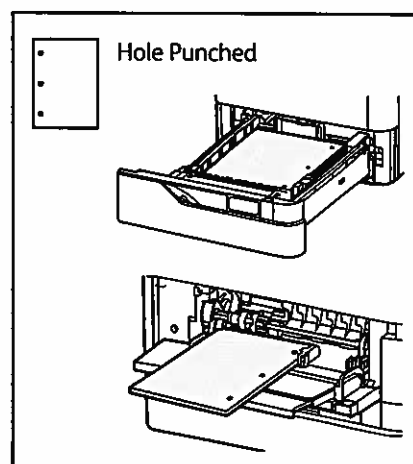
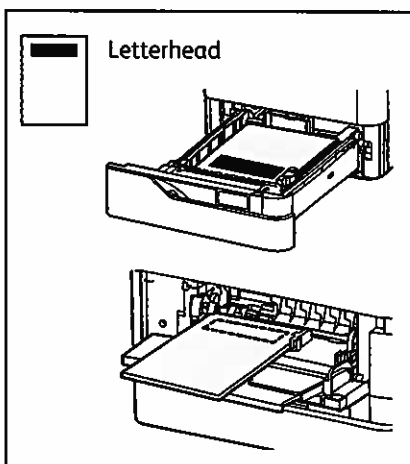
Confirm or change size, type, and color settings if needed.



For the best results, fan the edges of the paper. Adjust the guides to fit the paper size. Do not load paper above the maximum fill line.

When printing, select options in the print driver.

Paper Orientation



Scanning and Emailing

If the printer is connected to a network, you can select a destination for the scanned image at the printer control panel.

This guide defines techniques to scan documents without preparing special setups:

- Scanning documents to an email address.
- Scanning documents to a saved Favorite, Address Book listing, or USB Flash Drive.
- Scanning documents to the Default Public folder on the printer hard drive, and retrieving them using your Web browser.

For details and more scan setups, refer to the *User Guide*. For details about address book and workflow template setup, refer to the *System Administrator Guide*.

1



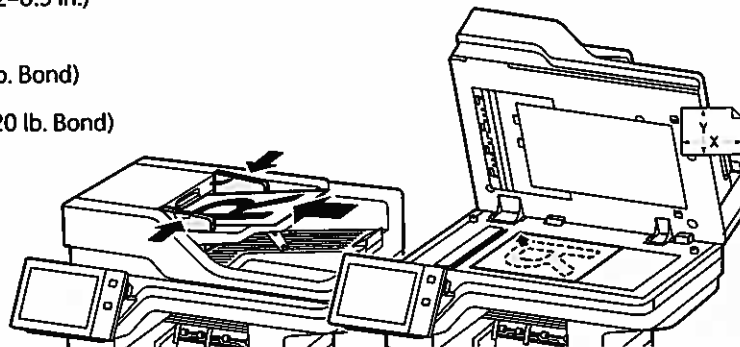
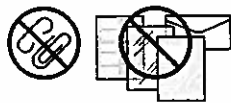
X: 127–356 mm (4.88–14 in.)
Y: 76–216 mm (2–8.5 in.)



52–120 g/m²
(14 lb. Text–32 lb. Bond)



≤100 (75 g/m², 20 lb. Bond)



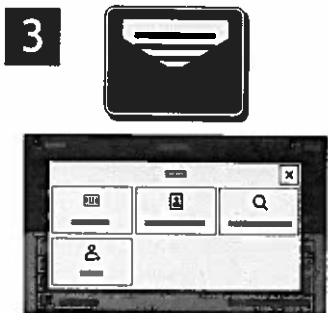
X: 25–355.6 mm (.98–14 in.)
Y: 25–215.9 mm (.98–8.5 in.)

Load the original documents.

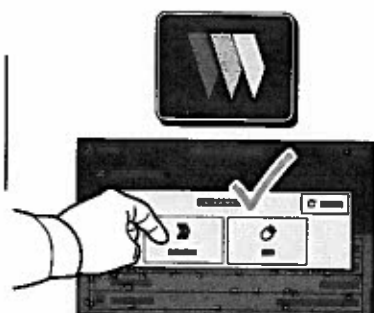
2



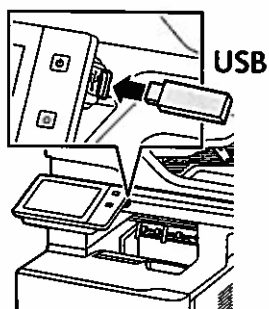
Press **Home**, then to email the scan, touch **Email**. To scan to the Default Public Folder or a USB Flash Drive, touch **Workflow Scanning**. If your scan destination is stored in the Address Book or saved as a Favorite, touch **Scan To**.



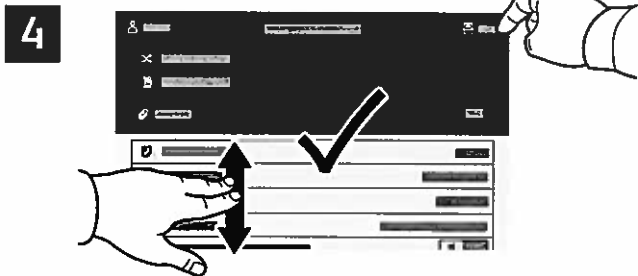
For Email, touch **Manual Entry**, type the email address using the touch screen keypad, then touch **Add**. To add more than one email address to the list, touch **Add Recipient**. To type a subject line for the email, touch **Subject**. To select saved email addresses, use the Device Address Book or select from Favorites.



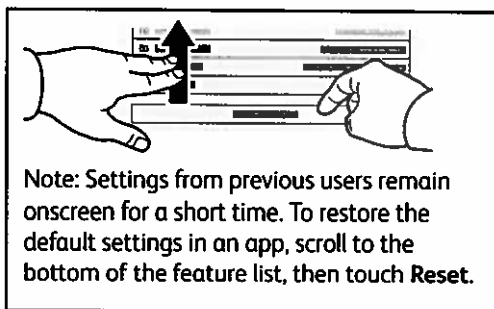
For Workflow Scanning, touch **Default Public Folder**, or insert your USB Flash Drive.



For Scan To, touch a destination type, then enter the appropriate information. To add more than one destination to the list, touch **Add Destination**.



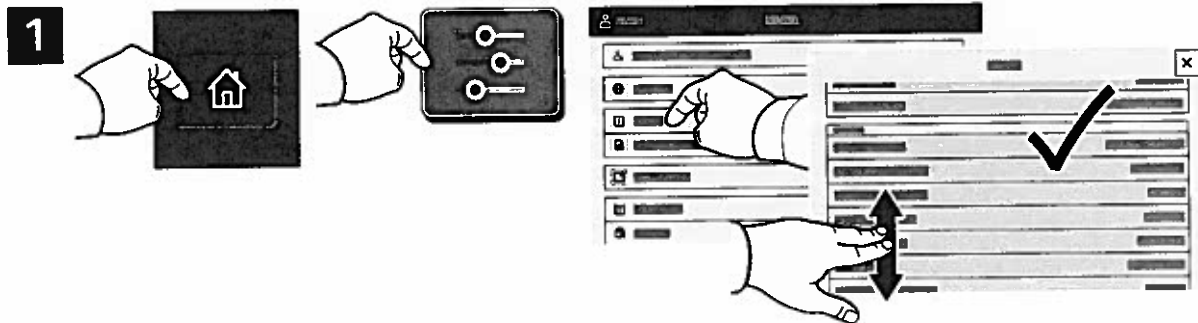
Change the settings as needed, then touch **Scan**, or for Email, touch **Send**.



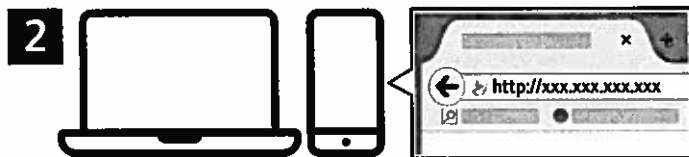
Note: Settings from previous users remain onscreen for a short time. To restore the default settings in an app, scroll to the bottom of the feature list, then touch **Reset**.

Retrieving Scan Files

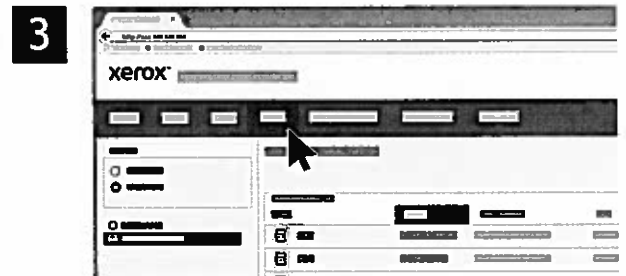
To download your scanned images from the Default Public Folder on the printer, use the Embedded Web Server. You can set up personal folders and workflow scanning templates in the Embedded Web Server. For details, refer to the *User Guide*.



Note the printer IP address on the touch screen. If the IP Address does not appear in the top of the touch screen, press Home, touch **Device** > **About** then scroll to check the IP Address.

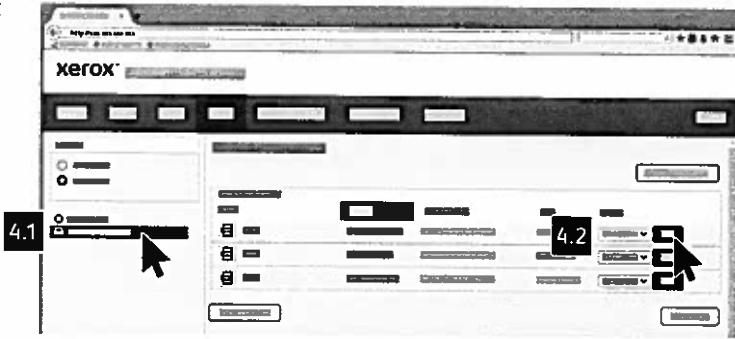


In a Web browser, type the printer IP address, then press **Enter** or **Return**.



Click the **Scan** tab.

4



Select the **Default Public Folder**, then find your scan in the list. To download the scan, click **Go**.

To refresh the list, click **Update View**.

To save the file to your computer, select **Download**.

To print the saved file again, select **Reprint**.

To permanently remove the stored job, select **Delete**.

To open a directory, select **Open**.

Faxing


You can send a fax in one of four ways:


- **Fax** scans the document then sends it directly to a fax machine.
- **Server Fax** scans the document then sends it to a fax server, which transmits the document to a fax machine.
- **Internet Fax** scans the document then emails it to a recipient.
- **LAN Fax** sends the current print job as a fax.

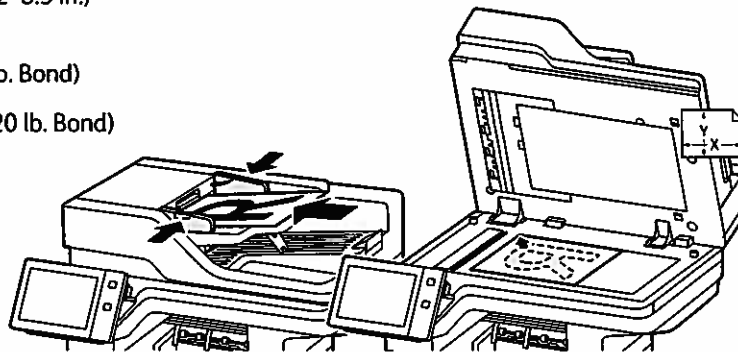
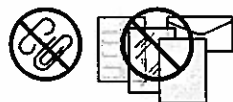
For details, refer to the *User Guide*. For details about LAN Fax, refer to the print driver software. For details about fax setup and advanced settings, refer to the *System Administrator Guide*.

1

 X: 127–356 mm (4.88–14 in.)
Y: 76–216 mm (2–8.5 in.)

 52–120 g/m²
(14 lb. Text–32 lb. Bond)

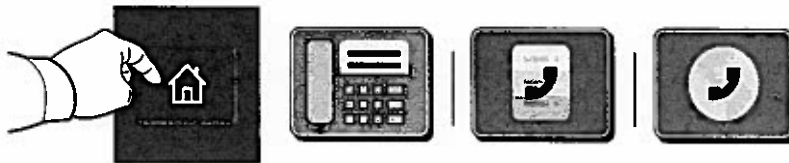
 ≤100 (75 g/m², 20 lb. Bond)



X: 25–355.6mm (.98–14 in.)
Y: 25–215.9 mm (.98–8.5 in.)

Load the original documents.

2

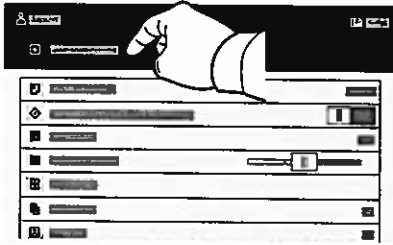


To send the fax to a fax machine, press **Home**, then touch **Fax** or **Server Fax**.

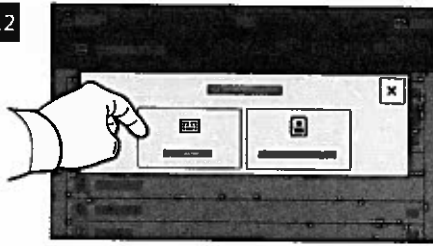
To send the fax as an email attachment, touch **Home**, then touch **Internet Fax**.

3

3.1



3.2



3.3

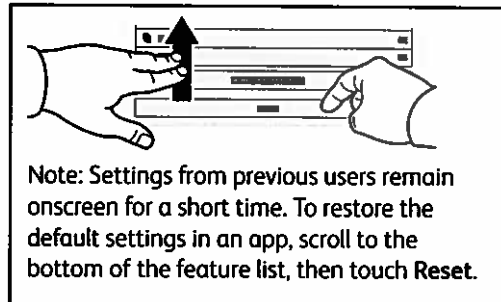
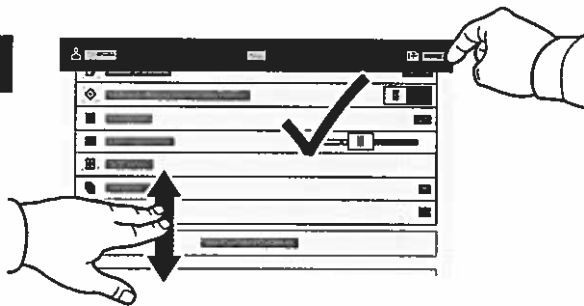


For fax numbers, touch **Manual Entry**, then enter the fax number using the touch screen alphanumeric keys and special characters. Touch **Add**. To add more fax numbers to the list, touch **Add Recipient**.

For Internet Fax email addresses, touch **Manual Entry**, then enter the email address using the touch screen keypad. Touch **Add**. To add more email addresses to the list, touch **Add Recipient**.

To select saved numbers, use the Device Address Book or Favorites. To select stored fax locations, use the Mailbox or Polling.

4

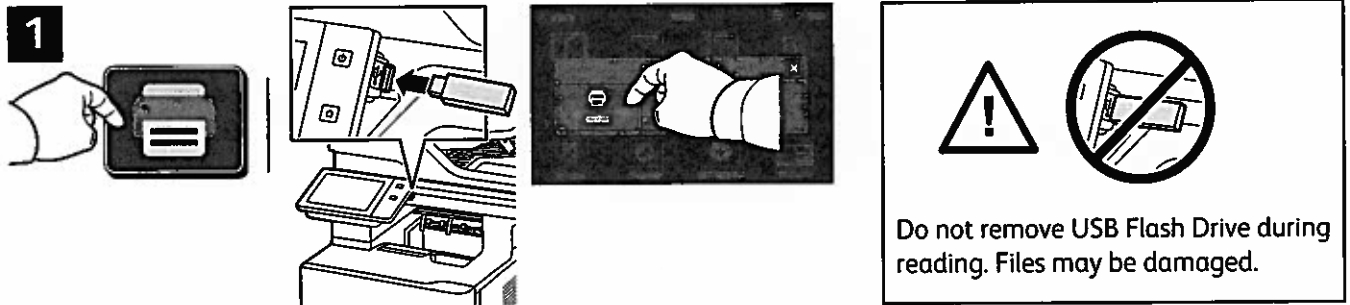


Note: Settings from previous users remain onscreen for a short time. To restore the default settings in an app, scroll to the bottom of the feature list, then touch **Reset**.

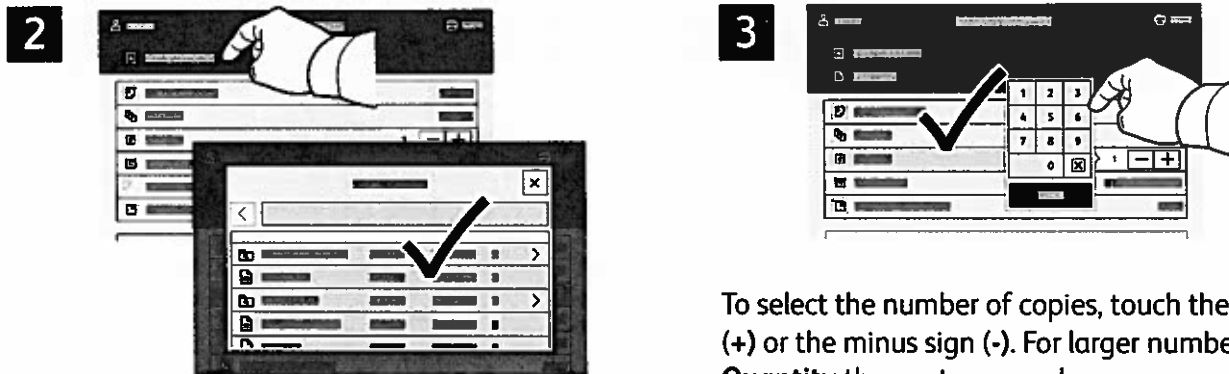
Change the settings as needed, then touch **Send**.

Printing from a USB Flash Drive

You can print .pdf, .tiff, .ps, .xps and other files types directly from a USB Flash Drive. For more information, refer to the *User Guide*.

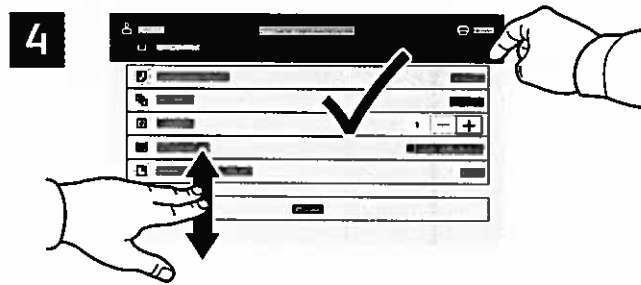


Touch **Print From** or insert your USB Flash Drive, then choose **Print From USB**.

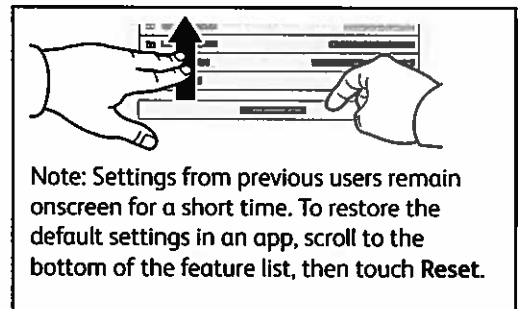


To select the number of copies, touch the plus sign (+) or the minus sign (-). For larger numbers, touch **Quantity** then enter a number.

Touch **Add Document**, then navigate to your files and select them.



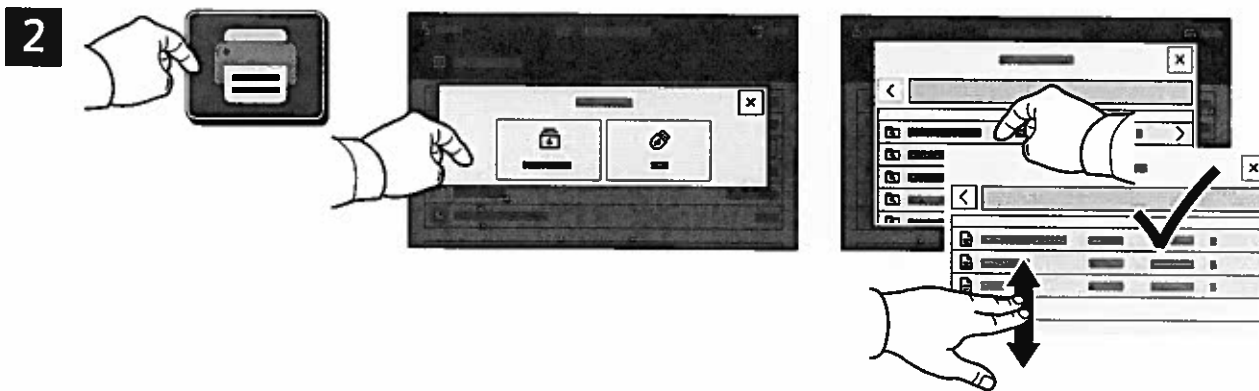
Select settings as needed, then touch **Print**.



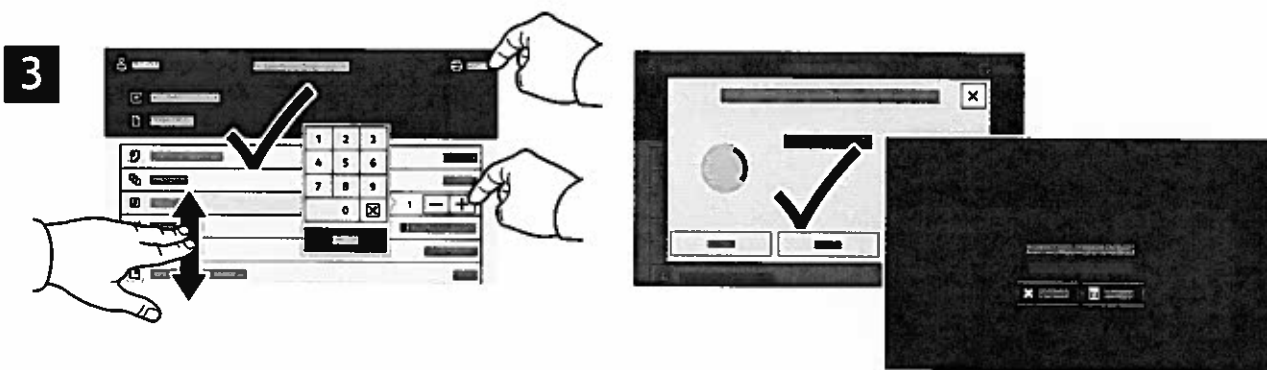
Printing Jobs Stored on the Printer



You can send a print job to save to the printer, then select the job from the printer control panel to print at a later time. Jobs can be saved in the public folder or be password protected. In the Xerox® printer driver, select **Properties** (Windows) or **Xerox Features** (Mac OS), then **Job Type**. Select **Saved Job** or **Secure Print**. For Secure Print, type a passcode. Click **OK** and print the job.



Touch **Print From** then touch **Saved Jobs**. Select the **Default Public Folder** then select your print job.



Select settings from the list. To select the number of copies, touch the plus sign (+) or the minus sign (-). For larger numbers, touch **Quantity** then enter a number. Touch **Print**. To delete the job, in the printing screen and confirmation screen, touch **Delete**.

Troubleshooting Print Quality

Your Xerox® Versalink® B625 Multifunction Printer is designed to produce high-quality prints consistently. If you observe print-quality problems, use the information on these pages to troubleshoot the problems. For detailed online support information, go to www.xerox.com/office/support.

CAUTION: The Xerox® warranty, Service Agreement, or Total Satisfaction Guarantee does not cover damage caused by using unsupported paper, transparencies, or other specialty media. The Total Satisfaction Guarantee is available in the United States and Canada. Coverage can vary outside of these areas. For details, contact your local representative.

Paper Type

CAUTION: If you change the type of paper in the tray, change the paper type at the control panel to match the paper in the tray. If you fail to change the paper type, it can cause print-quality problems and damage the fuser.

For the best results, only use recommended Xerox® paper and media. Xerox® paper and media are guaranteed to produce excellent results on your Xerox® Versalink® B625 Multifunction Printer. To order Xerox® paper and media, go to www.xerox.com/office/supplies.

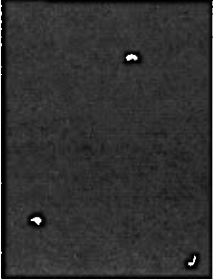
For a complete list of recommended paper for your printer, go to:

- North America: www.xerox.com/rmlna
- Europe: www.xerox.com/rmlieu

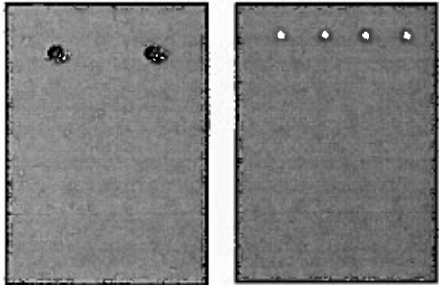
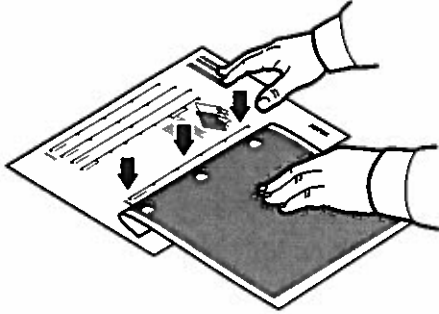
Solving Print-Quality Problems

Use the following tables to find specific solutions to print-quality problems.

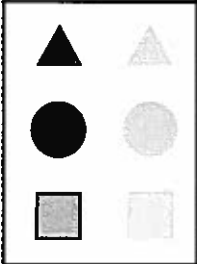
Solving Print-Quality Problems

Problem	Solution
<p>Incomplete Fusing Toner appears to be missing from the print, or rubs off easily.</p> 	<ol style="list-style-type: none"> 1. Verify that the paper you are using is the correct type for the printer and is properly loaded. For a complete list of recommended paper for your printer, go to: <ul style="list-style-type: none"> – North America: www.xerox.com/rmlna – Europe: www.xerox.com/rmleu 2. Verify that the paper type is selected on the control panel and in the print driver. 3. If the problem persists, do one of the following: <p>Note: To change the size, type, or color of paper in a dedicated tray when the control panel is locked, log in as the system administrator.</p> <ol style="list-style-type: none"> a. For trays that are set to Dedicated: <ol style="list-style-type: none"> b. At the control panel, touch Log In. Enter system administrator login information, then touch Enter. For details, refer to the <i>System Administrator Guide</i>. c. Touch Device > Tools > Device Settings > Paper Management > Tray Settings. Select the tray, touch Edit, then change the paper type. d. For trays that are set to Fully Adjustable: <ol style="list-style-type: none"> e. Paper Trays: Open, then close the selected paper tray. f. Bypass Tray : Remove, then reinsert the paper. <p>The control panel prompts you to confirm or change the paper type.</p> <ul style="list-style-type: none"> • At the touch screen, touch Type, then do one of the following: <ul style="list-style-type: none"> • Select the correct paper type, then touch Confirm. • Select the next heavier type of paper, then touch Confirm. <p>Note: Paper types from lightest to heaviest are:</p> <ul style="list-style-type: none"> • For uncoated paper: Plain, Lightweight Cardstock, and Cardstock.

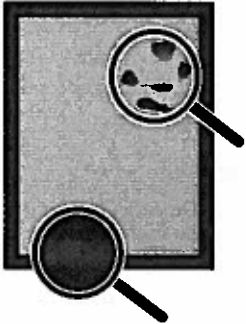
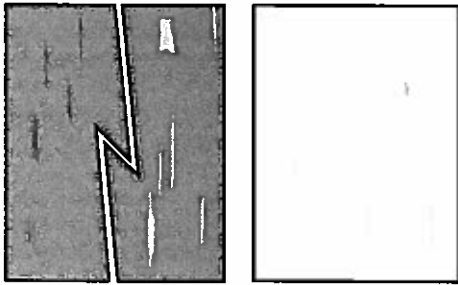
Solving Print-Quality Problems (continued)

Problem	Solution
<p data-bbox="201 327 402 352">Repeating Defects</p> <p data-bbox="201 365 652 483">Spots or lines appear at regular intervals on the page in the direction that the paper moves through the printer or in non-printed areas.</p> 	<ol style="list-style-type: none"><li data-bbox="734 327 1451 453">1. At the control panel, touch Device > Tools > Troubleshooting > Support Pages > Repeating Defects Page > Print. The Repeating Defects Page prints with instructions for identifying defective units.<li data-bbox="734 466 1435 525">2. To correct the problem, replace items identified on the Repeating Defects Page. <li data-bbox="734 865 1490 1226">3. If you replace a supply, reset the counter:<ol style="list-style-type: none"><li data-bbox="766 907 1490 991">a. At the control panel, touch Log In. Enter system administrator login information, then touch Enter. For details, refer to the <i>System Administrator Guide</i>.<li data-bbox="766 1003 1214 1033">b. Touch Device > Tools > Device Settings.<li data-bbox="766 1045 1338 1075">c. Scroll, then touch Supplies > Supply Counter Reset.<li data-bbox="766 1087 1084 1117">d. Touch the replaced Supply.<li data-bbox="766 1129 1026 1159">e. Touch Reset Counter.<li data-bbox="766 1171 1451 1226">f. To close the pop-up window, touch X, touch admin, then select Log Out.

Solving Print-Quality Problems (continued)

Problem	Solution
<p>Offset Image</p> <p>The most common offset is toner that appears to be reprinted on the page and placed about 95 mm (3.75 in.) across the page in the direction that the paper moves through the printer.</p> <p>Note: For a different distance, use the Repeating Defects Page to identify the cause.</p> 	<ol style="list-style-type: none"> 1. Verify that the paper you are using is the correct paper type for the printer and is properly loaded. For a complete list of recommended paper for your printer, go to: <ul style="list-style-type: none"> – North America: www.xerox.com/rmlna – Europe: www.xerox.com/rmleu 2. Verify that the paper type is selected on the control panel and in the print driver. Note: To change the size, type, or color of paper in a dedicated tray when the control panel is locked, log in as the system administrator. 3. If the problem persists, do one of the following: Note: To change the size, type, or color of paper in a dedicated tray when the control panel is locked, log in as the system administrator. <ol style="list-style-type: none"> a. For trays that are set to Dedicated: <ol style="list-style-type: none"> b. At the control panel, touch Log In. Enter system administrator login information, then touch Enter. For details, refer to the <i>System Administrator Guide</i>. c. Touch Device > Tools > Device Settings > Paper Management > Tray Settings. Select the tray, touch Edit, then change the paper type. d. For trays that are set to Fully Adjustable: <ol style="list-style-type: none"> e. Paper Trays: Open, then close the selected paper tray. f. Bypass Tray: Remove, then reinsert the paper. <p>The control panel prompts you to confirm or change the paper type.</p> <ul style="list-style-type: none"> • At the touch screen, touch Type, then do one of the following: <ul style="list-style-type: none"> • Select the correct paper type, then touch Confirm. • Select the next heavier type of paper, then touch Confirm. <p>Note: Paper types from lightest to heaviest are:</p> <ul style="list-style-type: none"> • For uncoated paper: Plain, Lightweight Cardstock, and Cardstock. 4. To identify the cause, use the Repeating Defects Page. For details, refer to the previous page.

Solving Print-Quality Problems (continued)

Problem	Solution
<p>Heavy Coverage Appears Mottled or Blotchy Blacks Appear Blue</p> 	<ol style="list-style-type: none"> 1. Verify that the paper you are using is the correct type for the printer and is properly loaded. For a complete list of recommended paper for your printer, go to: <ul style="list-style-type: none"> – North America: www.xerox.com/rmlna – Europe: www.xerox.com/rmleu 2. Verify that the paper type is selected on the control panel and in the print driver. <p>Note: If the problem continues, call for service.</p>
<p>Gray Tones Too Light or Too Dark Gray tones appear faded or too dark on print or copy.</p>	<ol style="list-style-type: none"> 1. Verify that the paper you are using is the correct type for the printer and is properly loaded. For a complete list of recommended paper for your printer, go to: <ul style="list-style-type: none"> – North America: www.xerox.com/rmlna – Europe: www.xerox.com/rmleu 2. Verify that the paper type is selected on the control panel and in the print driver. 3. Adjust the lightness settings in the Copy settings or the print driver. For information about changing the Lightness setting in the PostScript print driver for your operating system, refer to the <i>Printing</i> chapter of the <i>User Guide</i>.
<p>Lines, Smudges, or Streaks Dark or light marks appear on the page in all tones or non-printed areas.</p> 	<ol style="list-style-type: none"> 1. Verify that the paper you are using is the correct type for the printer and is properly loaded. For a complete list of recommended paper for your printer, go to: <ul style="list-style-type: none"> – North America: www.xerox.com/rmlna – Europe: www.xerox.com/rmleu 2. Verify that the paper type is selected on the control panel and in the print driver. 3. To identify the cause, refer to the Repeating Defects Page that prints with <i>Troubleshooting Print Quality Page</i>. At the control panel, touch Device > Tools > Troubleshooting > Support Pages > Repeating Defects Page > Print. 4. To correct the problem, replace items identified on the Repeating Defects Page.

Print-Quality Settings

The Windows PostScript print driver and the Macintosh print drivers provide the highest print-quality modes: You can change these settings in the print driver. Select the setting that is best suited for your print job.

Print-Quality Mode

- **Enhanced mode** is the general-purpose mode for crisp, smooth-toned prints. Enhanced mode balances speed with quality.
- **High Resolution mode** is a high-quality mode that creates smooth-toned prints with fine lines and detail. High Resolution mode balances quality over speed.
- **Toner Saver mode** reduces the amount of toner used for print jobs and is useful for draft-quality output. Print quality is slightly lower than using Standard mode.

Image Options

Image options controls how the printer uses lightness and contrast to produce your document. The Windows PostScript print driver and the Macintosh print drivers provide the widest range of controls on the Image Options tab.

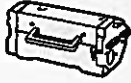
- To locate Image Options in Windows, in the print driver, click the **Image Options** tab.
- To locate Image Options on Macintosh, in the Print window, in the print options list, click **Xerox Features**. Within Xerox Features, in the options list, click **Image Options**.

Supplies Usage

Supplies ordering information is located at
www.xerox.com/office/supplies

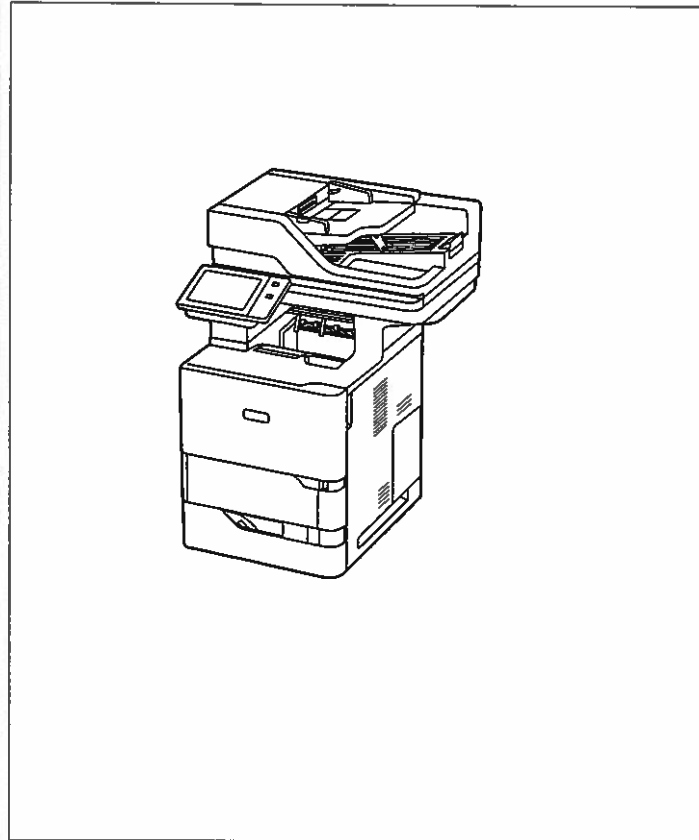
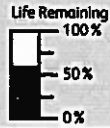
Consumables

Toner Cartridges



Black

Date Installed: Oct 31, 2021
Reorder:
Estimated Pages Remaining: 6000
(Based upon this toner cartridge's average coverage: 4%)



Routine Maintenance Items

Imaging Unit



Black (R1)

Date Installed: Nov 16, 2023
Reorder: 2583476
Estimated Pages Remaining: 127500
(Based on average printer job size: 1 Pages)



Resident Fonts

Position	Font Name	Print Sample
1	Courier «Esc»(Symbol set«Esc»(s0p«pitch»h0s0b4099T	'ABCDEFGFGabcdefg0123456789&?!.,'
2	CG Times «Esc»(Symbol set«Esc»(s1p«size»v0s0b4101T	'ABCDEFGFGabcdefg0123456789&?!.,'
3	CG Times Bold «Esc»(Symbol set«Esc»(s1p«size»v0s3b4101T	'ABCDEFGFGabcdefg0123456789&?!.,'
4	CG Times Italic «Esc»(Symbol set«Esc»(s1p«size»v1s0b4101T	' <i>ABCDEFGFGabcdefg0123456789&?!.,'</i>
5	CG Times Bold Italic «Esc»(Symbol set«Esc»(s1p«size»v1s3b4101T	' <i>ABCDEFGFGabcdefg0123456789&?!.,'</i>
6	CG Omega «Esc»(Symbol set«Esc»(s1p«size»v0s0b4113T	'ABCDEFGFGabcdefg0123456789&?!.,'
7	CG Omega Bold «Esc»(Symbol set«Esc»(s1p«size»v0s3b4113T	'ABCDEFGFGabcdefg0123456789&?!.,'
8	CG Omega Italic «Esc»(Symbol set«Esc»(s1p«size»v1s0b4113T	' <i>ABCDEFGFGabcdefg0123456789&?!.,'</i>
9	CG Omega Bold Italic «Esc»(Symbol set«Esc»(s1p«size»v1s3b4113T	' <i>ABCDEFGFGabcdefg0123456789&?!.,'</i>
10	Coronet «Esc»(Symbol set«Esc»(s1p«size»v1s0b4116T	' <i>ABCDEF^gGabcdefg0123456789&?!.,'</i>
11	Clarendon Condensed «Esc»(Symbol set«Esc»(s1p«size»v4s3b4140T	'ABCDEFGFGabcdefg0123456789&?!.,'
12	Univers Medium «Esc»(Symbol set«Esc»(s1p«size»v0s0b4148T	'ABCDEFGFGabcdefg0123456789&?!.,'
13	Univers Bold «Esc»(Symbol set«Esc»(s1p«size»v0s3b4148T	'ABCDEFGFGabcdefg0123456789&?!.,'
14	Univers Medium Italic «Esc»(Symbol set«Esc»(s1p«size»v1s0b4148T	' <i>ABCDEFGFGabcdefg0123456789&?!.,'</i>
15	Univers Bold Italic «Esc»(Symbol set«Esc»(s1p«size»v1s3b4148T	' <i>ABCDEFGFGabcdefg0123456789&?!.,'</i>
16	Univers Medium Condensed «Esc»(Symbol set«Esc»(s1p«size»v4s0b4148T	'ABCDEFGFGabcdefg0123456789&?!.,'
17	Univers Bold Condensed «Esc»(Symbol set«Esc»(s1p«size»v4s3b4148T	'ABCDEFGFGabcdefg0123456789&?!.,'

Resident Fonts

Position	Font Name	Print Sample
18	Univers Medium Condensed Italic «Esc»(Symbol set«Esc»(s1p«size»v5s0b4148T	'ABCDEFGabcdefg0123456789&?!.,'
19	Univers Bold Condensed Italic «Esc»(Symbol set«Esc»(s1p«size»v5s3b4148T	'ABCDEFGabcdefg0123456789&?!.,'
20	Antique Olive «Esc»(Symbol set«Esc»(s1p«size»v0s0b4168T	'ABCDEFGabcdefg0123456789&?!.,'
21	Antique Olive Bold «Esc»(Symbol set«Esc»(s1p«size»v0s3b4168T	'ABCDEFGabcdefg0123456789&?!.,'
22	Antique Olive Italic «Esc»(Symbol set«Esc»(s1p«size»v1s0b4168T	'ABCDEFGabcdefg0123456789&?!.,'
23	Garamond Antiqua «Esc»(Symbol set«Esc»(s1p«size»v0s0b4197T	'ABCDEFGabcdefg0123456789&?!.,'
24	Garamond Halbfett «Esc»(Symbol set«Esc»(s1p«size»v0s3b4197T	'ABCDEFGabcdefg0123456789&?!.,'
25	Garamond Kursiv «Esc»(Symbol set«Esc»(s1p«size»v1s0b4197T	'ABCDEFGabcdefg0123456789&?!.,'
26	Garamond Kursiv Halbfett «Esc»(Symbol set«Esc»(s1p«size»v1s3b4197T	'ABCDEFGabcdefg0123456789&?!.,'
27	Marigold «Esc»(Symbol set«Esc»(s1p«size»v0s0b4297T	'ABCDEFGabcdefg0123456789&?!.,'
28	Albertus Medium «Esc»(Symbol set«Esc»(s1p«size»v0s1b4362T	'ABCDEFGabcdefg0123456789&?!.,'
29	Albertus Extra Bold «Esc»(Symbol set«Esc»(s1p«size»v0s4b4362T	'ABCDEFGabcdefg0123456789&?!.,'
30	Ryadh «Esc»(Symbol set«Esc»(s1p«size»v0s0b4859T	ABCDEFGabcdefg0123456789&?!.,'
31	Ryadh Bold «Esc»(Symbol set«Esc»(s1p«size»v0s3b4859T	ABCDEFGabcdefg0123456789&?!.,'
32	Malka «Esc»(Symbol set«Esc»(s1p«size»v0s0b16584T	ABCDEFGabcdefg0123456789&?!.,'
33	Malka Bold «Esc»(Symbol set«Esc»(s1p«size»v0s3b16584T	ABCDEFGabcdefg0123456789&?!.,'
34	Malka Italic «Esc»(Symbol set«Esc»(s1p«size»v1s0b16584T	ABCDEFGabcdefg0123456789&?!.,'

Resident Fonts

Position	Font Name	Print Sample
35	Dorit «Esc»(Symbol set«Esc»(s1p«size»v0s0b16585T	ABCDEFGGabcdefg0123456789&?!.,'
36	Dorit Bold «Esc»(Symbol set«Esc»(s1p«size»v0s3b16585T	ABCDEFGGabcdefg0123456789&?!.,'
37	Naamit «Esc»(Symbol set«Esc»(s1p«size»v0s0b16587T	ABCDEFGGabcdefg0123456789&?!.,'
38	Naamit Bold «Esc»(Symbol set«Esc»(s1p«size»v0s3b16587T	ABCDEFGGabcdefg0123456789&?!.,'
39	Arial «Esc»(Symbol set«Esc»(s1p«size»v0s0b16602T	'ABCDEFGGabcdefg0123456789&?!.,'
40	Arial Bold «Esc»(Symbol set«Esc»(s1p«size»v0s3b16602T	'ABCDEFGGabcdefg0123456789&?!.,'
41	Arial Italic «Esc»(Symbol set«Esc»(s1p«size»v1s0b16602T	<i>'ABCDEFGGabcdefg0123456789&?!.,'</i>
42	Arial Bold Italic «Esc»(Symbol set«Esc»(s1p«size»v1s3b16602T	<i>'ABCDEFGGabcdefg0123456789&?!.,'</i>
43	Times New Roman «Esc»(Symbol set«Esc»(s1p«size»v0s0b16901T	'ABCDEFGGabcdefg0123456789&?!.,'
44	Times New Roman Bold «Esc»(Symbol set«Esc»(s1p«size»v0s3b16901T	'ABCDEFGGabcdefg0123456789&?!.,'
45	Times New Roman Italic «Esc»(Symbol set«Esc»(s1p«size»v1s0b16901T	<i>'ABCDEFGGabcdefg0123456789&?!.,'</i>
46	Times New Roman Bold Italic «Esc»(Symbol set«Esc»(s1p«size»v1s3b16901T	<i>'ABCDEFGGabcdefg0123456789&?!.,'</i>
47	Helvetica «Esc»(Symbol set«Esc»(s1p«size»v0s0b24580T	'ABCDEFGGabcdefg0123456789&?!.,'
48	Helvetica Bold «Esc»(Symbol set«Esc»(s1p«size»v0s3b24580T	'ABCDEFGGabcdefg0123456789&?!.,'
49	Helvetica Oblique «Esc»(Symbol set«Esc»(s1p«size»v1s0b24580T	<i>'ABCDEFGGabcdefg0123456789&?!.,'</i>
50	Helvetica Bold Oblique «Esc»(Symbol set«Esc»(s1p«size»v1s3b24580T	<i>'ABCDEFGGabcdefg0123456789&?!.,'</i>
51	Helvetica Narrow «Esc»(Symbol set«Esc»(s1p«size»v4s0b24580T	'ABCDEFGGabcdefg0123456789&?!.,'

Resident Fonts

Position	Font Name	Print Sample
52	Helvetica Narrow Bold «Esc»(Symbol set«Esc»(s1p«size»v4s3b24580T	'ABCDEFGabcdefg0123456789&?!.,'
53	Helvetica Narrow Oblique «Esc»(Symbol set«Esc»(s1p«size»v5s0b24580T	'ABCDEFGabcdefg0123456789&?!.,'
54	Helvetica Narrow Bold Oblique «Esc»(Symbol set«Esc»(s1p«size»v5s3b24580T	'ABCDEFGabcdefg0123456789&?!.,'
55	Palatino Roman «Esc»(Symbol set«Esc»(s1p«size»v0s0b24591T	'ABCDEFGabcdefg0123456789&?!.,'
56	Palatino Bold «Esc»(Symbol set«Esc»(s1p«size»v0s3b24591T	'ABCDEFGabcdefg0123456789&?!.,'
57	Palatino Italic «Esc»(Symbol set«Esc»(s1p«size»v1s0b24591T	'ABCDEFGabcdefg0123456789&?!.,'
58	Palatino Bold Italic «Esc»(Symbol set«Esc»(s1p«size»v1s3b24591T	'ABCDEFGabcdefg0123456789&?!.,'
59	ITC Avant Garde Book «Esc»(Symbol set«Esc»(s1p«size»v0s0b24607T	'ABCDEFGabcdefg0123456789&?!.,'
60	ITC Avant Garde DemiBold «Esc»(Symbol set«Esc»(s1p«size»v0s2b24607T	'ABCDEFGabcdefg0123456789&?!.,'
61	ITC Avant Garde Book Oblique «Esc»(Symbol set«Esc»(s1p«size»v1s0b24607T	'ABCDEFGabcdefg0123456789&?!.,'
62	ITC Avant Garde DemiBold Oblique «Esc»(Symbol set«Esc»(s1p«size»v1s2b24607T	'ABCDEFGabcdefg0123456789&?!.,'
63	ITC Bookman Light «Esc»(Symbol set«Esc»(s1p«size»v0s-3b24623T	'ABCDEFGabcdefg0123456789&?!.,'
64	ITC Bookman DemiBold «Esc»(Symbol set«Esc»(s1p«size»v0s2b24623T	'ABCDEFGabcdefg0123456789&?!.,'
65	ITC Bookman Light Italic «Esc»(Symbol set«Esc»(s1p«size»v1s-3b24623T	'ABCDEFGabcdefg0123456789&?!.,'
66	ITC Bookman DemiBold Italic «Esc»(Symbol set«Esc»(s1p«size»v1s2b24623T	'ABCDEFGabcdefg0123456789&?!.,'
67	New Century Schoolbook Roman «Esc»(Symbol set«Esc»(s1p«size»v0s0b24703T	'ABCDEFGabcdefg0123456789&?!.,'
68	New Century Schoolbook Bold «Esc»(Symbol set«Esc»(s1p«size»v0s3b24703T	'ABCDEFGabcdefg0123456789&?!.,'

Resident Fonts

Position	Font Name	Print Sample
86	Naskh «Esc»(Symbol set«Esc»(sOp«pitch»h0s0b4124T	ABCDEFGGabcdefg0123456789&?!.,
87	Naskh Bold «Esc»(Symbol set«Esc»(sOp«pitch»h0s3b4124T	ABCDEFGGabcdefg0123456789&?!.,
88	Koufi «Esc»(Symbol set«Esc»(sOp«pitch»h0s0b4264T	ABCDEFGGabcdefg0123456789&?!.,
89	Koufi Bold «Esc»(Symbol set«Esc»(sOp«pitch»h0s3b4264T	ABCDEFGGabcdefg0123456789&?!.,
90	Courier PS «Esc»(Symbol set«Esc»(sOp«pitch»h0s0b24579T	'ABCDEFGGabcdefg0123456789&?!.,'
91	Courier PS Bold «Esc»(Symbol set«Esc»(sOp«pitch»h0s3b24579T	'ABCDEFGGabcdefg0123456789&?!.,'
92	Courier PS Oblique «Esc»(Symbol set«Esc»(sOp«pitch»h1s0b24579T	' <i>ABCDEFGGabcdefg0123456789&?!.,</i> '
93	Courier PS Bold Oblique «Esc»(Symbol set«Esc»(sOp«pitch»h1s3b24579T	'<i>ABCDEFGGabcdefg0123456789&?!.,</i>'
93	Line Printer «Esc»(8U«Esc»(sOp16.67h8.48v0s0b0T	'ABCDEFGGabcdefg0123456789&?!.,'

PostScript Font Listing

Internal Fonts:

AlbertusMT	ABCDEF abcdefg 0123456789 &?!\$,€
AlbertusMT-Italic	<i>ABCDEF abcdefg 0123456789 &?!\$,€</i>
AlbertusMT-Light	ABCDEF abcdefg 0123456789 &?!\$,€
AntiqueOlive-Bold	ABCDEF abcdefg 0123456789 &?!\$,€
AntiqueOlive-Compact	ABCDEF abcdefg 0123456789 &?!\$,€
AntiqueOlive-Italic	<i>ABCDEF abcdefg 0123456789 &?!\$,€</i>
AntiqueOlive-Roman	ABCDEF abcdefg 0123456789 &?!\$,€
Apple-Chancery	<i>ABCDEF abcdefg 0123456789 &?!\$,€</i>
Arial-BoldItalicMT	<i>ABCDEF abcdefg 0123456789 &?!\$,€</i>
Arial-BoldMT	ABCDEF abcdefg 0123456789 &?!\$,€
Arial-ItalicMT	<i>ABCDEF abcdefg 0123456789 &?!\$,€</i>
ArialMT	ABCDEF abcdefg 0123456789 &?!\$,€
AvantGarde-Book	ABCDEF abcdefg 0123456789 &?!\$,€
AvantGarde-BookOblique	<i>ABCDEF abcdefg 0123456789 &?!\$,€</i>
AvantGarde-Demi	ABCDEF abcdefg 0123456789 &?!\$,€
AvantGarde-DemiOblique	<i>ABCDEF abcdefg 0123456789 &?!\$,€</i>
Bodoni	ABCDEF abcdefg 0123456789 &?!\$,€
Bodoni-Bold	ABCDEF abcdefg 0123456789 &?!\$,€
Bodoni-BoldItalic	<i>ABCDEF abcdefg 0123456789 &?!\$,€</i>
Bodoni-Italic	<i>ABCDEF abcdefg 0123456789 &?!\$,€</i>
Bodoni-Poster	ABCDEF abcdefg 0123456789 &?!\$,€
Bodoni-PosterCompressed	ABCDEF abcdefg 0123456789 &?!\$,€
Bookman-Demi	ABCDEF abcdefg 0123456789 &?!\$,€
Bookman-DemiItalic	<i>ABCDEF abcdefg 0123456789 &?!\$,€</i>
Bookman-Light	ABCDEF abcdefg 0123456789 &?!\$,€
Bookman-LightItalic	<i>ABCDEF abcdefg 0123456789 &?!\$,€</i>
Carta	*!#▲*!# < i!@*!# 0123456789 *!#&€
Chicago	RBCDEF abcdefg 0123456789 &?!\$,€
Clarendon	ABCDEF abcdefg 0123456789 &?!\$,€
Clarendon-Bold	ABCDEF abcdefg 0123456789 &?!\$,€
Clarendon-Light	ABCDEF abcdefg 0123456789 &?!\$,€
CooperBlack	ABCDEF abcdefg 0123456789 &?!\$,€
CooperBlack-Italic	<i>ABCDEF abcdefg 0123456789 &?!\$,€</i>
Copperplate-ThirtyThreeBC	ABCDEF ABCDEF 0123456789 &?!\$,€
Copperplate-ThirtyTwoBC	ABCDEF ABCDEF 0123456789 &?!\$,€
Coronet-Regular	<i>ABCDEF abcdefg 0123456789 &?!\$,€</i>
Courier	ABCDEF abcdefg 0123456789 &?!\$,€
Courier-Bold	ABCDEF abcdefg 0123456789 &?!\$,€
Courier-BoldOblique	<i>ABCDEF abcdefg 0123456789 &?!\$,€</i>
Courier-Oblique	<i>ABCDEF abcdefg 0123456789 &?!\$,€</i>
Eurostile	ABCDEF abcdefg 0123456789 &?!\$,€
Eurostile-Bold	ABCDEF abcdefg 0123456789 &?!\$,€
Eurostile-BoldExtendedTwo	ABCDEF abcdefg 0123456789 &?!\$,€
Eurostile-ExtendedTwo	ABCDEF abcdefg 0123456789 &?!\$,€
Geneva	ABCDEF abcdefg 0123456789 &?!\$,€
GillSans	ABCDEF abcdefg 0123456789 &?!\$,€
GillSans-Bold	ABCDEF abcdefg 0123456789 &?!\$,€
GillSans-BoldCondensed	ABCDEF abcdefg 0123456789 &?!\$,€
GillSans-BoldItalic	<i>ABCDEF abcdefg 0123456789 &?!\$,€</i>
GillSans-Condensed	ABCDEF abcdefg 0123456789 &?!\$,€
GillSans-ExtraBold	ABCDEF abcdefg 0123456789 &?!\$,€
GillSans-Italic	<i>ABCDEF abcdefg 0123456789 &?!\$,€</i>
GillSans-Light	ABCDEF abcdefg 0123456789 &?!\$,€
GillSans-LightItalic	<i>ABCDEF abcdefg 0123456789 &?!\$,€</i>
Goudy	ABCDEF abcdefg 0123456789 &?!\$,€
Goudy-Bold	ABCDEF abcdefg 0123456789 &?!\$,€
Goudy-BoldItalic	<i>ABCDEF abcdefg 0123456789 &?!\$,€</i>
Goudy-ExtraBold	ABCDEF abcdefg 0123456789 &?!\$,€
Goudy-Italic	<i>ABCDEF abcdefg 0123456789 &?!\$,€</i>
GreekMono737	ABCDEF abcdefg 0123456789 &?!\$,€
GreekMono737-Bold	ABCDEF abcdefg 0123456789 &?!\$,€
GreekMono737-BoldItalic	<i>ABCDEF abcdefg 0123456789 &?!\$,€</i>
GreekMono737-Italic	<i>ABCDEF abcdefg 0123456789 &?!\$,€</i>
GreekMono851	ABCDEF abcdefg 0123456789 &?!\$,€

PostScript Font Listing

Internal Fonts (continued):

NewCenturySchlbk-BoldItalic	ABCDEFG abcdefg 0123456789 &!\$.€
NewCenturySchlbk-Italic	<i>ABCDEFG abcdefg 0123456789 &!\$.€</i>
NewCenturySchlbk-Roman	ABCDEFG abcdefg 0123456789 &!\$.€
NewYork	ABCDEFG abcdefg 0123456789 &!\$.€
Optima	ABCDEFG abcdefg 0123456789 &!\$.€
Optima-Bold	ABCDEFG abcdefg 0123456789 &!\$.€
Optima-BoldItalic	<i>ABCDEFG abcdefg 0123456789 &!\$.€</i>
Optima-Italic	<i>ABCDEFG abcdefg 0123456789 &!\$.€</i>
Oxford	ABCDEFG abcdefg 0123456789 &!\$.€
Palatino-Bold	ABCDEFG abcdefg 0123456789 &!\$.€
Palatino-BoldItalic	<i>ABCDEFG abcdefg 0123456789 &!\$.€</i>
Palatino-Italic	<i>ABCDEFG abcdefg 0123456789 &!\$.€</i>
Palatino-Roman	ABCDEFG abcdefg 0123456789 &!\$.€
StempelGaramond-Bold	ABCDEFG abcdefg 0123456789 &!\$.€
StempelGaramond-BoldItalic	<i>ABCDEFG abcdefg 0123456789 &!\$.€</i>
StempelGaramond-Italic	<i>ABCDEFG abcdefg 0123456789 &!\$.€</i>
StempelGaramond-Roman	ABCDEFG abcdefg 0123456789 &!\$.€
Symbol	ABXΔEΦΓ αβγδεϕζ 0123456789 &!\$.€
Tekton	ABCDEFG abcdefg 0123456789 &!\$.€
Times-Bold	ABCDEFG abcdefg 0123456789 &!\$.€
Times-BoldItalic	<i>ABCDEFG abcdefg 0123456789 &!\$.€</i>
Times-Italic	<i>ABCDEFG abcdefg 0123456789 &!\$.€</i>
Times-Roman	ABCDEFG abcdefg 0123456789 &!\$.€
TimesNewRomanPS-BoldItalicMT	<i>ABCDEFG abcdefg 0123456789 &!\$.€</i>
TimesNewRomanPS-BoldMT	ABCDEFG abcdefg 0123456789 &!\$.€
TimesNewRomanPS-ItalicMT	<i>ABCDEFG abcdefg 0123456789 &!\$.€</i>
TimesNewRomanPSMT	ABCDEFG abcdefg 0123456789 &!\$.€
Univers	ABCDEFG abcdefg 0123456789 &!\$.€
Univers-Bold	ABCDEFG abcdefg 0123456789 &!\$.€
Univers-BoldExt	ABCDEFG abcdefg 0123456789 &!\$.€
Univers-BoldExtObl	<i>ABCDEFG abcdefg 0123456789 &!\$.€</i>
Univers-BoldOblique	<i>ABCDEFG abcdefg 0123456789 &!\$.€</i>
Univers-Condensed	ABCDEFG abcdefg 0123456789 &!\$.€
Univers-CondensedBold	ABCDEFG abcdefg 0123456789 &!\$.€
Univers-CondensedBoldOblique	<i>ABCDEFG abcdefg 0123456789 &!\$.€</i>
Univers-CondensedOblique	<i>ABCDEFG abcdefg 0123456789 &!\$.€</i>
Univers-Extended	ABCDEFG abcdefg 0123456789 &!\$.€
Univers-ExtendedObl	<i>ABCDEFG abcdefg 0123456789 &!\$.€</i>
Univers-Light	ABCDEFG abcdefg 0123456789 &!\$.€
Univers-LightOblique	<i>ABCDEFG abcdefg 0123456789 &!\$.€</i>
Univers-Oblique	<i>ABCDEFG abcdefg 0123456789 &!\$.€</i>
Wingdings	Ⓐ Ⓑ Ⓒ Ⓓ Ⓔ Ⓕ Ⓖ Ⓗ Ⓘ Ⓚ Ⓛ Ⓜ Ⓝ Ⓟ Ⓡ Ⓢ Ⓣ Ⓤ Ⓥ Ⓦ Ⓧ Ⓨ Ⓩ ⓐ ⓑ ⓓ ⓔ ⓖ ⓗ ⓙ ⓚ ⓛ ⓞ ⓟ ⓠ ⓡ ⓢ ⓣ ⓤ ⓥ ⓦ ⓧ ⓨ ⓩ ⓪ ⓫ ⓬ ⓭ ⓮ ⓯ ⓰ ⓱ ⓲ ⓳ ⓴ ⓵ ⓶ ⓷ ⓸ ⓹ ⓺ ⓻ ⓼ ⓽ ⓾ ⓿ Ⓚ Ⓛ Ⓜ Ⓝ Ⓟ Ⓡ Ⓢ Ⓣ Ⓤ Ⓥ Ⓦ Ⓧ Ⓨ Ⓩ ⓐ ⓑ ⓓ ⓔ ⓖ ⓗ ⓙ ⓚ ⓛ ⓞ ⓟ ⓠ ⓡ ⓢ ⓣ ⓤ ⓥ ⓦ ⓧ ⓨ ⓩ ⓪ ⓫ ⓬ ⓭ ⓮ ⓯ ⓰ ⓱ ⓲ ⓳ ⓴ ⓵ ⓶ ⓷ ⓸ ⓹ ⓺ ⓻ ⓼ ⓽ ⓾ ⓿
ZapfChancery-MediumItalic	<i>ABCDEFJG abcdefg 0123456789 &!\$.€</i>
ZapfDingbats	Ⓚ Ⓛ Ⓜ Ⓝ Ⓟ Ⓡ Ⓢ Ⓣ Ⓤ Ⓥ Ⓦ Ⓧ Ⓨ Ⓩ ⓐ ⓑ ⓓ ⓔ ⓖ ⓗ ⓙ ⓚ ⓛ ⓞ ⓟ ⓠ ⓡ ⓢ ⓣ ⓤ ⓥ ⓦ ⓧ ⓨ ⓩ ⓪ ⓫ ⓬ ⓭ ⓮ ⓯ ⓰ ⓱ ⓲ ⓳ ⓴ ⓵ ⓶ ⓷ ⓸ ⓹ ⓺ ⓻ ⓼ ⓽ ⓾ ⓿